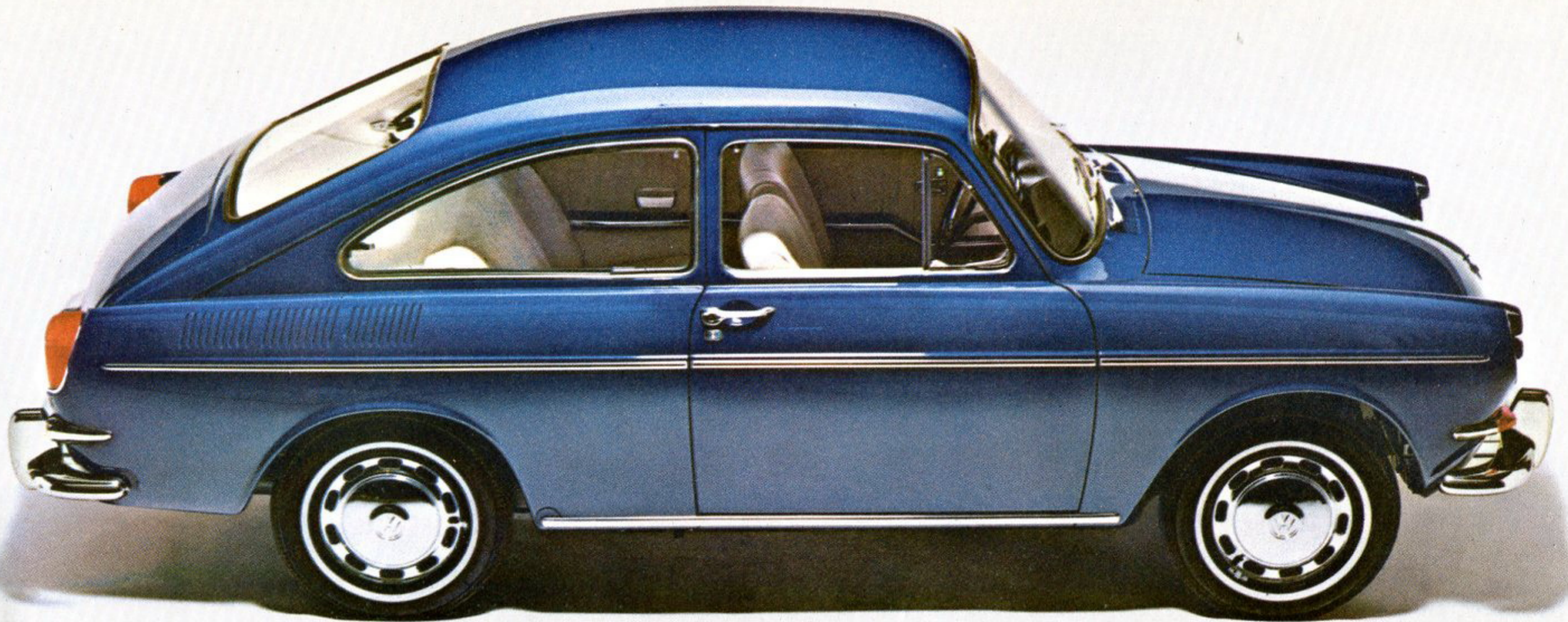




Is the VW Fastback a completely new Volkswagen?



Yes

This is what's new about the Volkswagen Fastback:

The fastback shape.

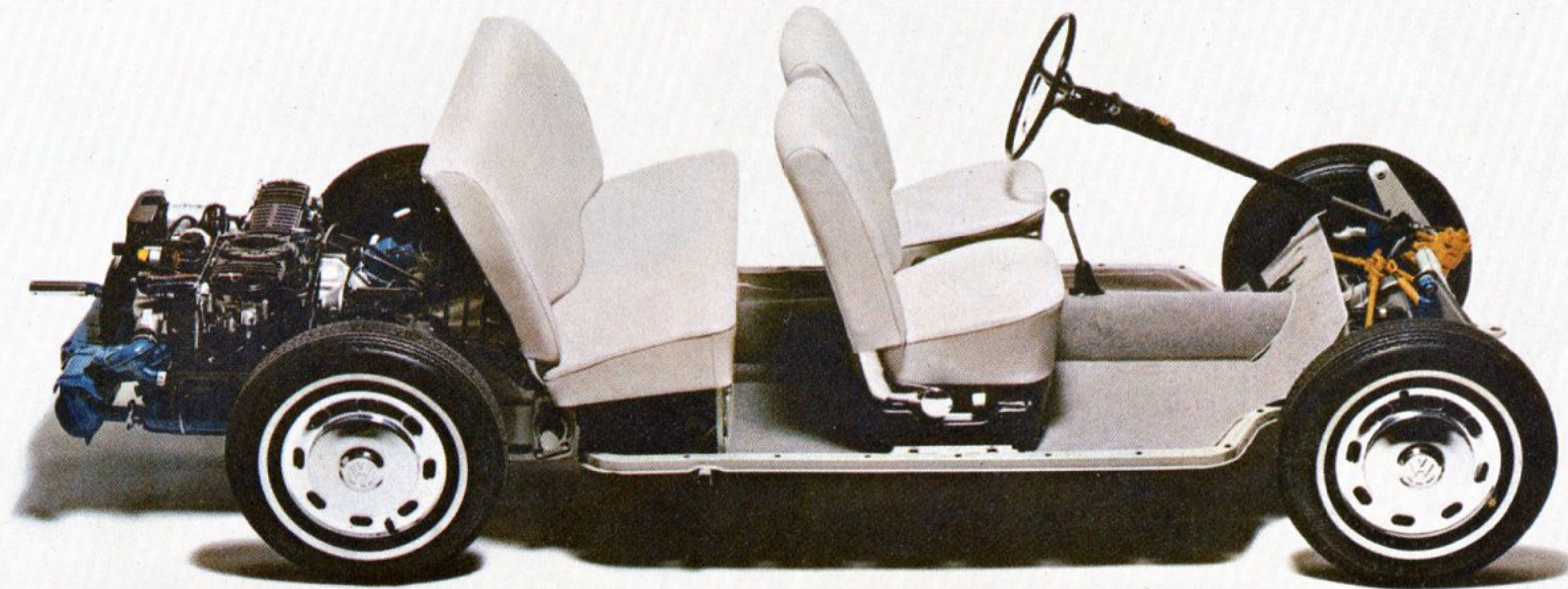
Self-adjusting front wheel disc brakes.

Upholstery, paneling, padding and carpeting all in one matching color.

That's it.

Other than the rakish roof line, the new braking system and the plush redecorating job inside, everything in our Fastback has been tested and developed in earlier model VWs. Example: the Fastback's twin-carburetor air-cooled engine is a refinement of an improvement on a development that goes back to our first VW Sedan, 19 years ago.

So when a friend sees you zipping around in your VW Fastback and asks, "What's new?," you can honestly tell him, "Nothing much."



and no.

This is what's tried and true in the Volkswagen Fastback:

The air-cooled engine. We don't use water because water boils and freezes. Air doesn't. So your Fastback will always perform reliably. Summer and winter.

The Fastback engine is the strongest we ever built. 65 horsepower. 1584 cc. displacement. It sits in back next to the drive wheels to give you extra traction in snow, sand and mud. And it's so compact (just 16 inches high) there's room above it for a spacious luggage compartment.

The transmission is all synchromesh. (Pure Volkswagen.) All four forward gears are synchronized to make shifting easy and quiet in every gear. You can even shift down to first without stopping or clashing gears.

And, of course, you get a stick shift. At no extra charge. Naturally, the wheels are independently suspended by

torsion bars. Each wheel travels its own road and takes its lumps and bumps without passing them on to the other wheels. You ride smoother for it.

Another trick we've learned over 19 years: how to get a lot of car into a small parking space. Which explains why our new Fastback can park in a VW Sedan-size space. The Fastback is only six inches longer.

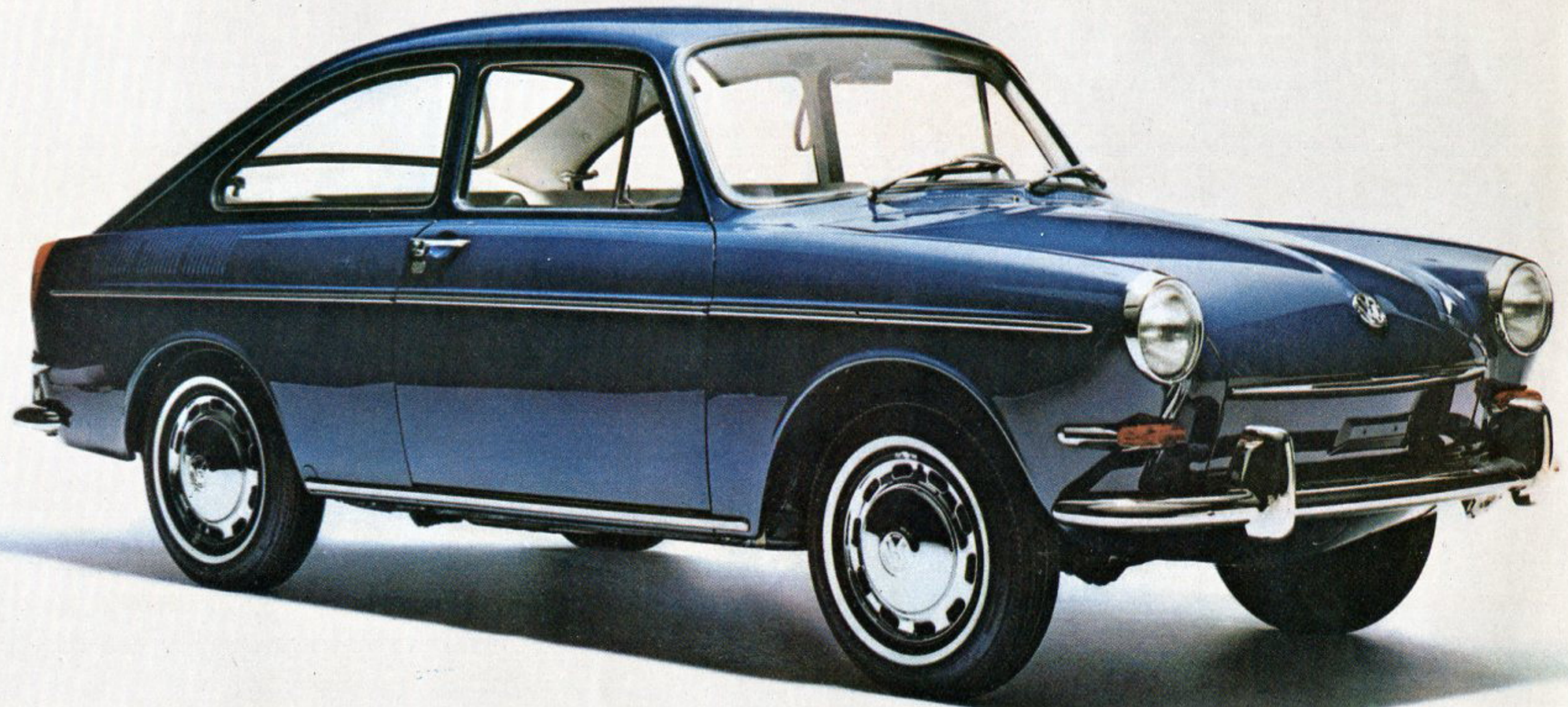
Even if you owned Volkswagens before, when you open the fold we think you'll see some Fastback features that you've never seen before in any Volkswagen.

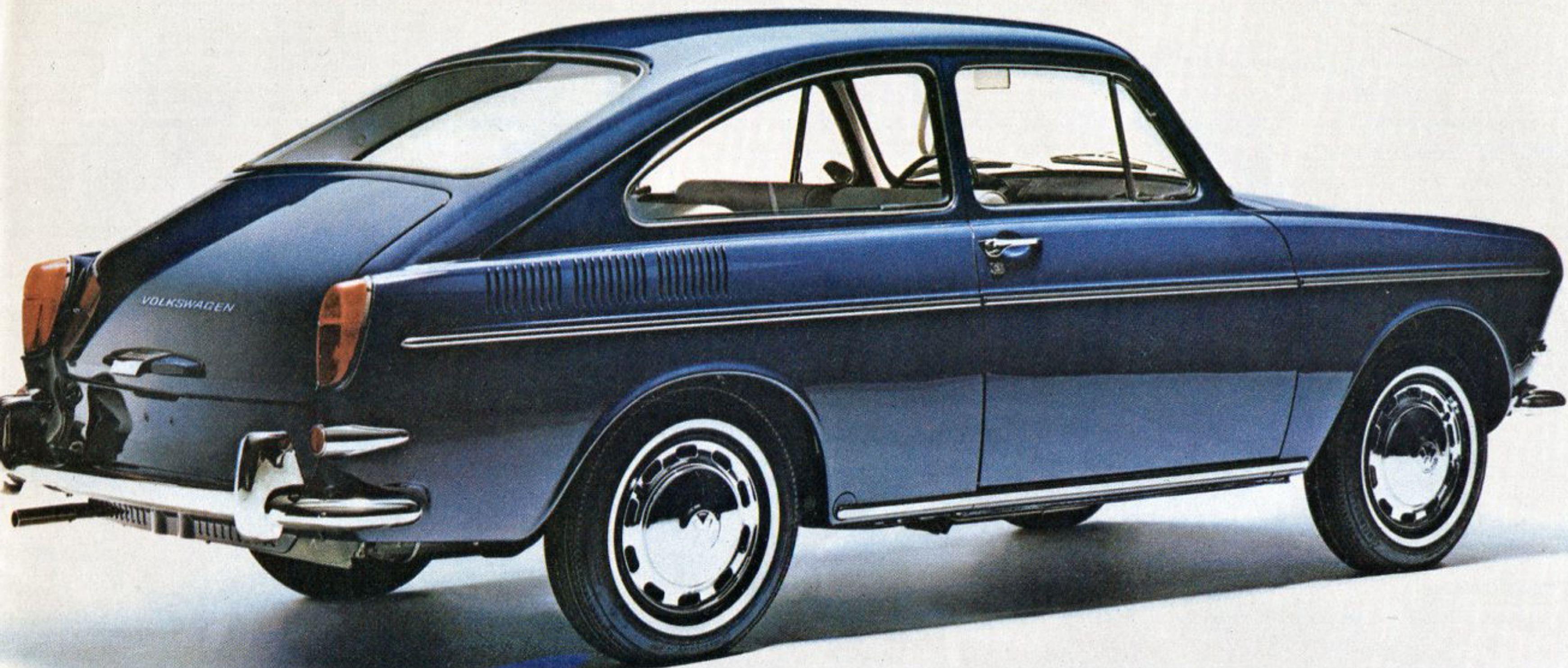
It doesn't mean they're brand-new.

We've been testing them for four years in VWs all over the world.

Now we think they're ready for you.

The question is: are you ready for them?





Top speed is 84 mph in the Volkswagen Fastback.

So it won't break any speed records.

But it won't break you either. You get the same kind of economy you'd expect to get from any model Volkswagen.

For example: the engine is one of the very few twin-carburetor engines that operate on regular gas. It averages about 28 miles to a gallon. A set of tires should be good for 40,000 miles. And you never buy antifreeze: no radiator.

However, you do get a fresh-air heater/defroster; vari-

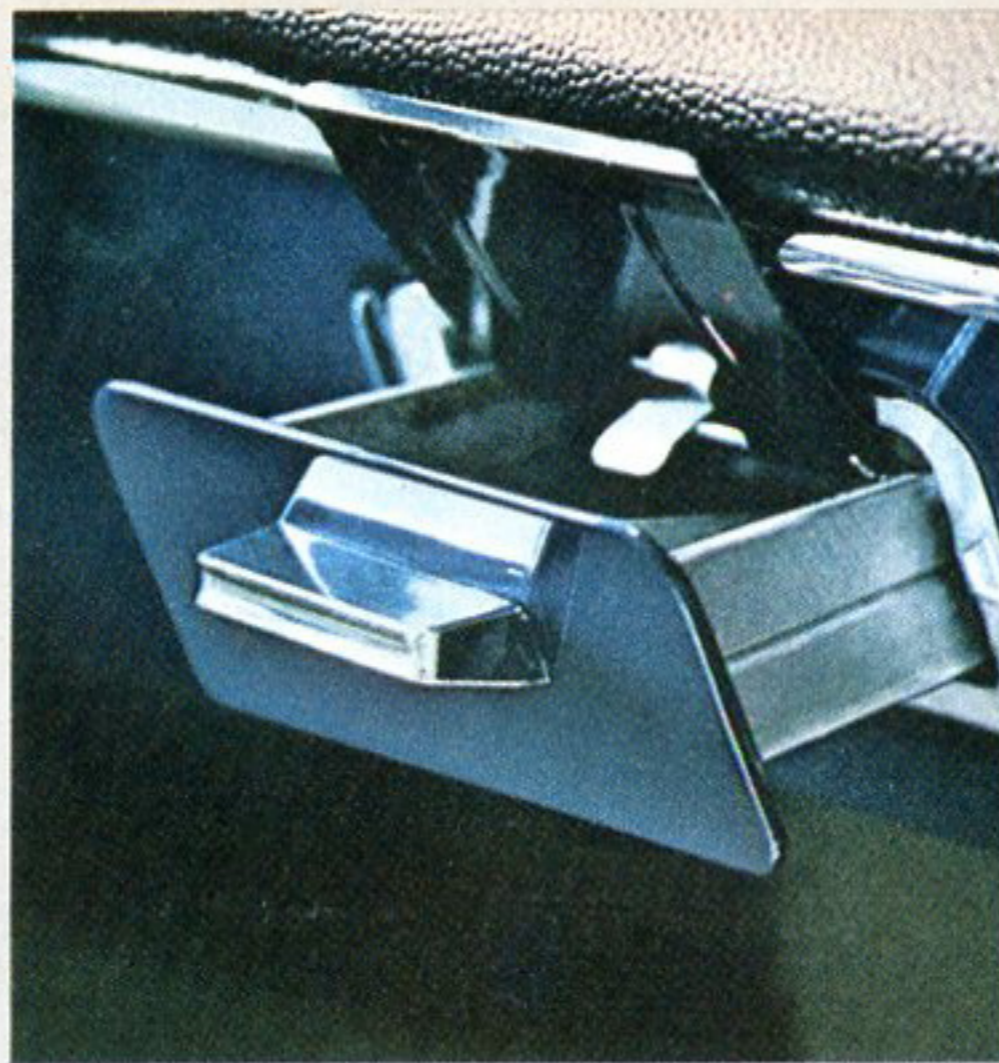
able speed windshield wiper; pneumatic windshield washer; padded cowling around the instruments; padded dashboard top; padded sun visors; washable plastic interior; two spacious door pockets; frontseat passenger grab handle; and an electric clock. They're all standard equipment.

You get these comforts and conveniences at no extra charge because when we make a fastback, we make a fastback.

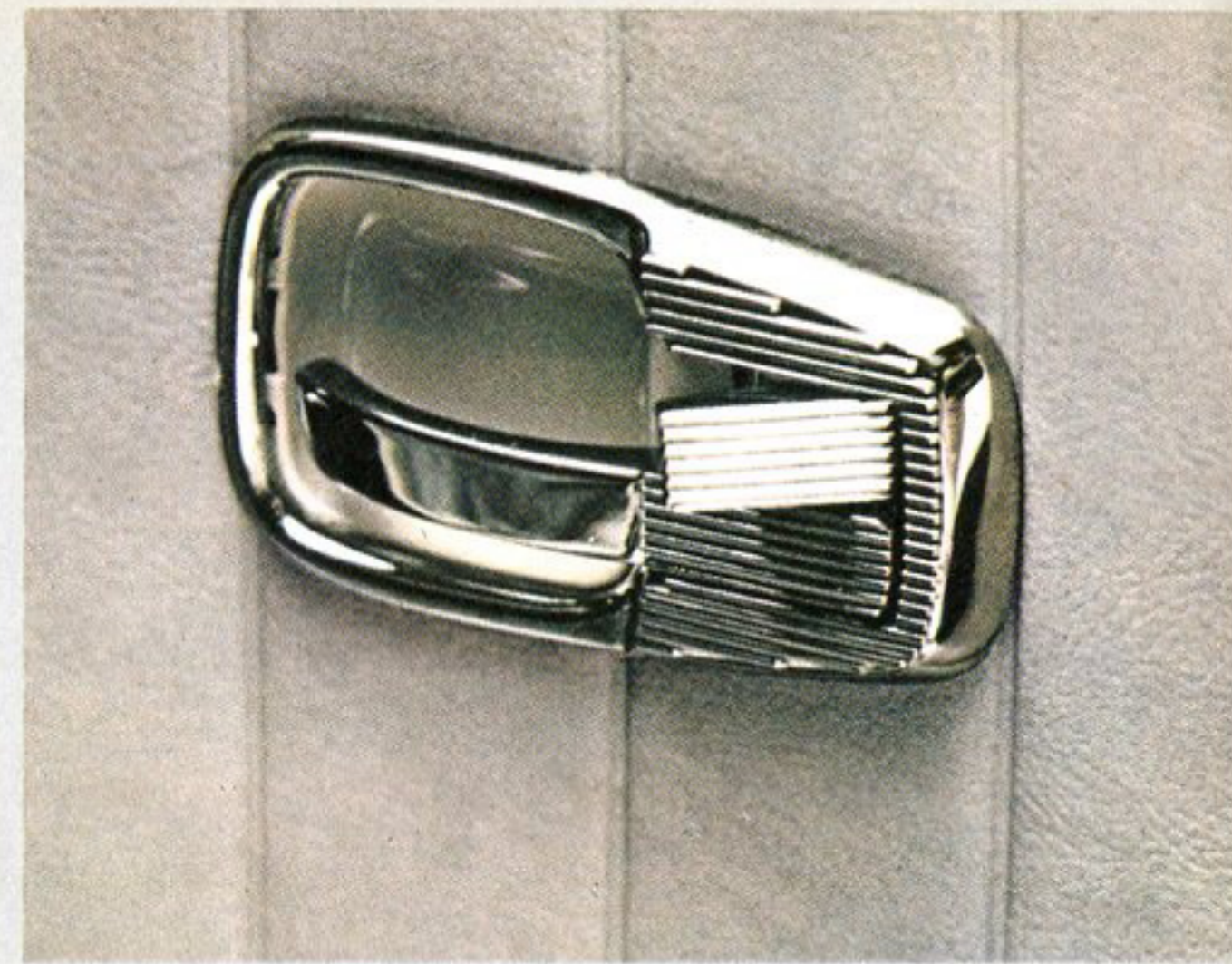
Not a fastbuck.



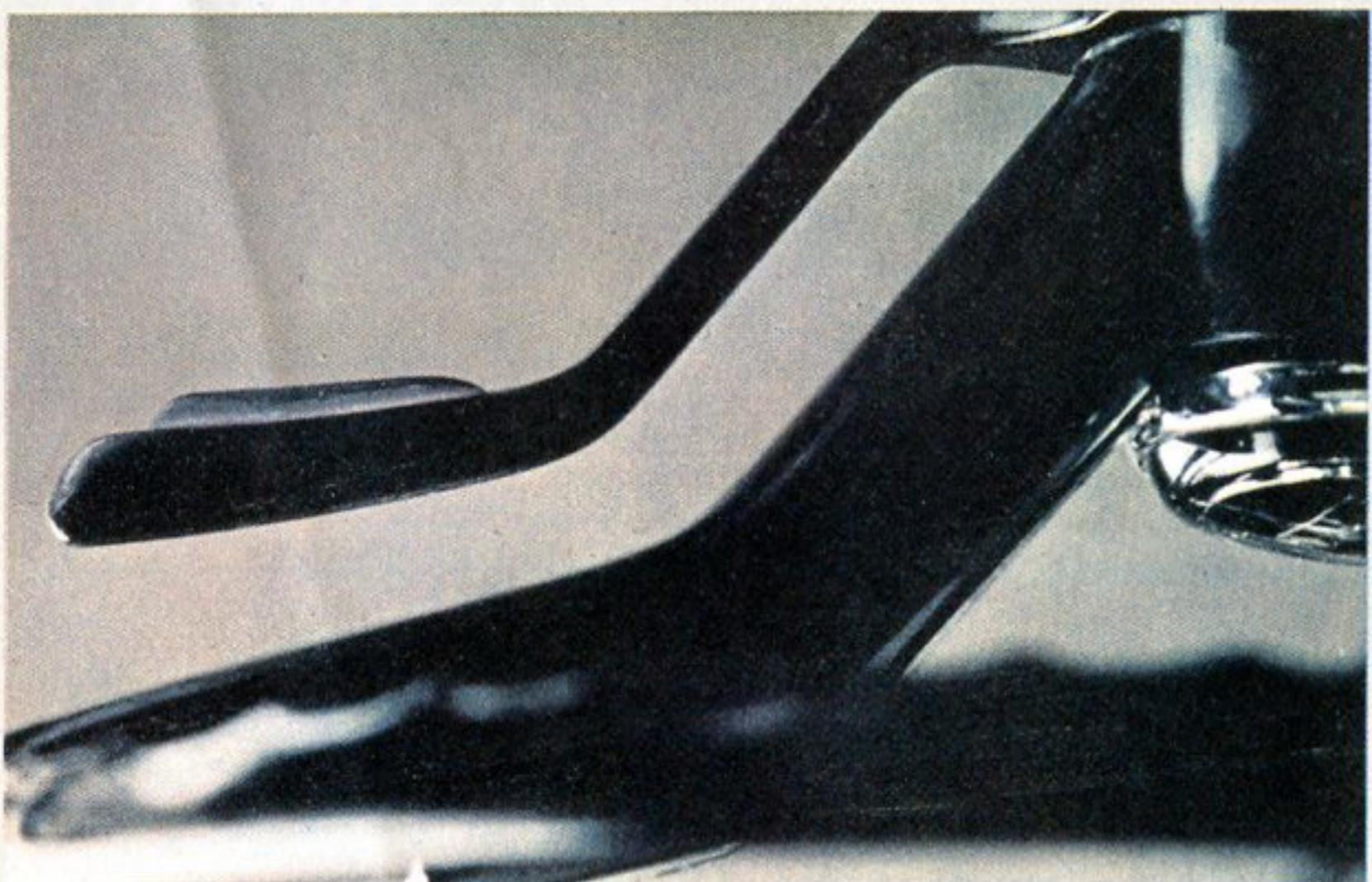
The spare tire sits in front of the forward luggage compartment. You don't have to unload to change a flat. Also up front: easy see-through plastic containers for the brake fluid and windshield-washer water.



Pull out the ashtray in the dashboard and a metal guard pops up. A neat touch that protects the finish and upholstery.



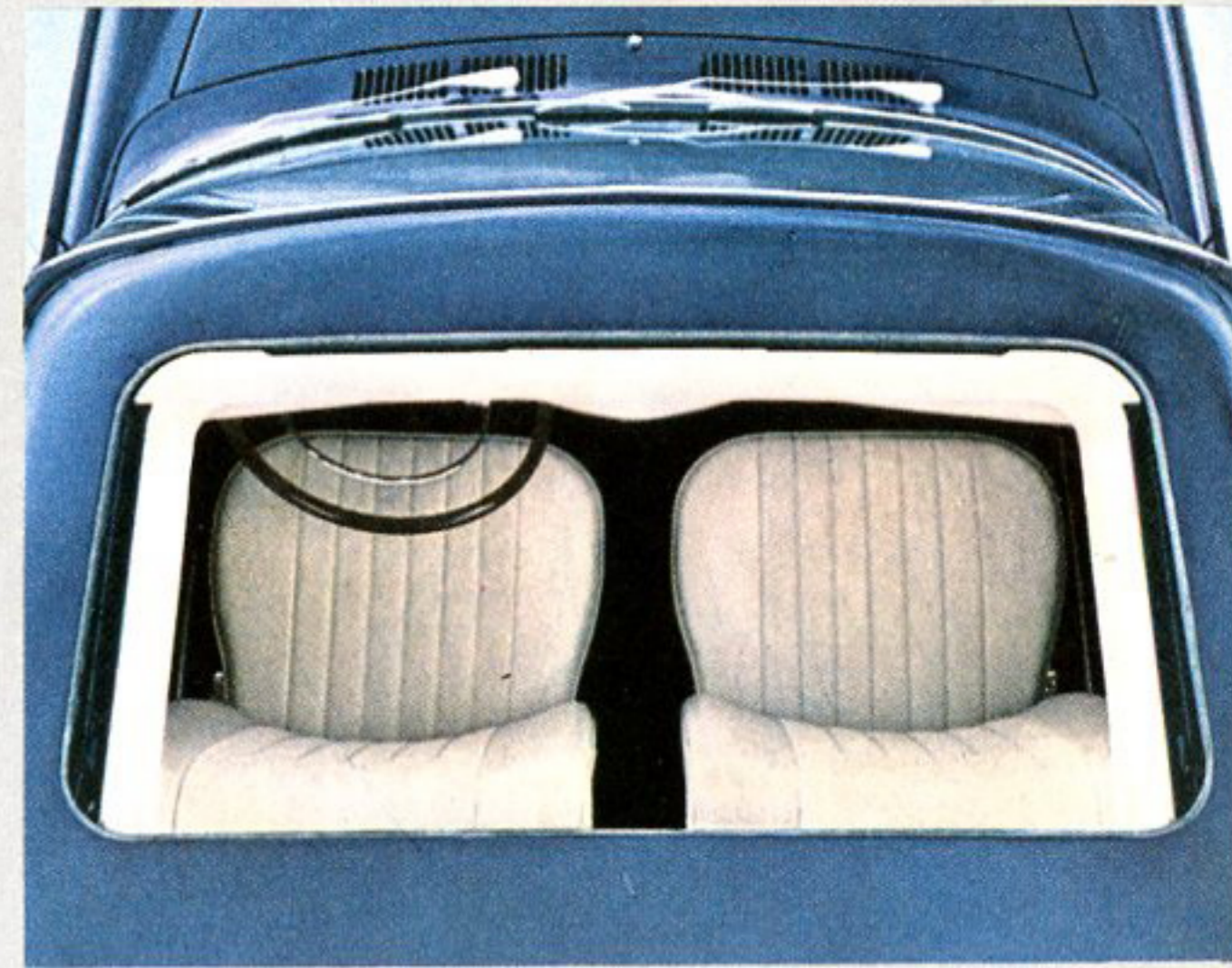
Recessed door handles won't catch your clothing. A light one-finger touch opens them. And you don't need a key to lock up. Just push the small lever closed.



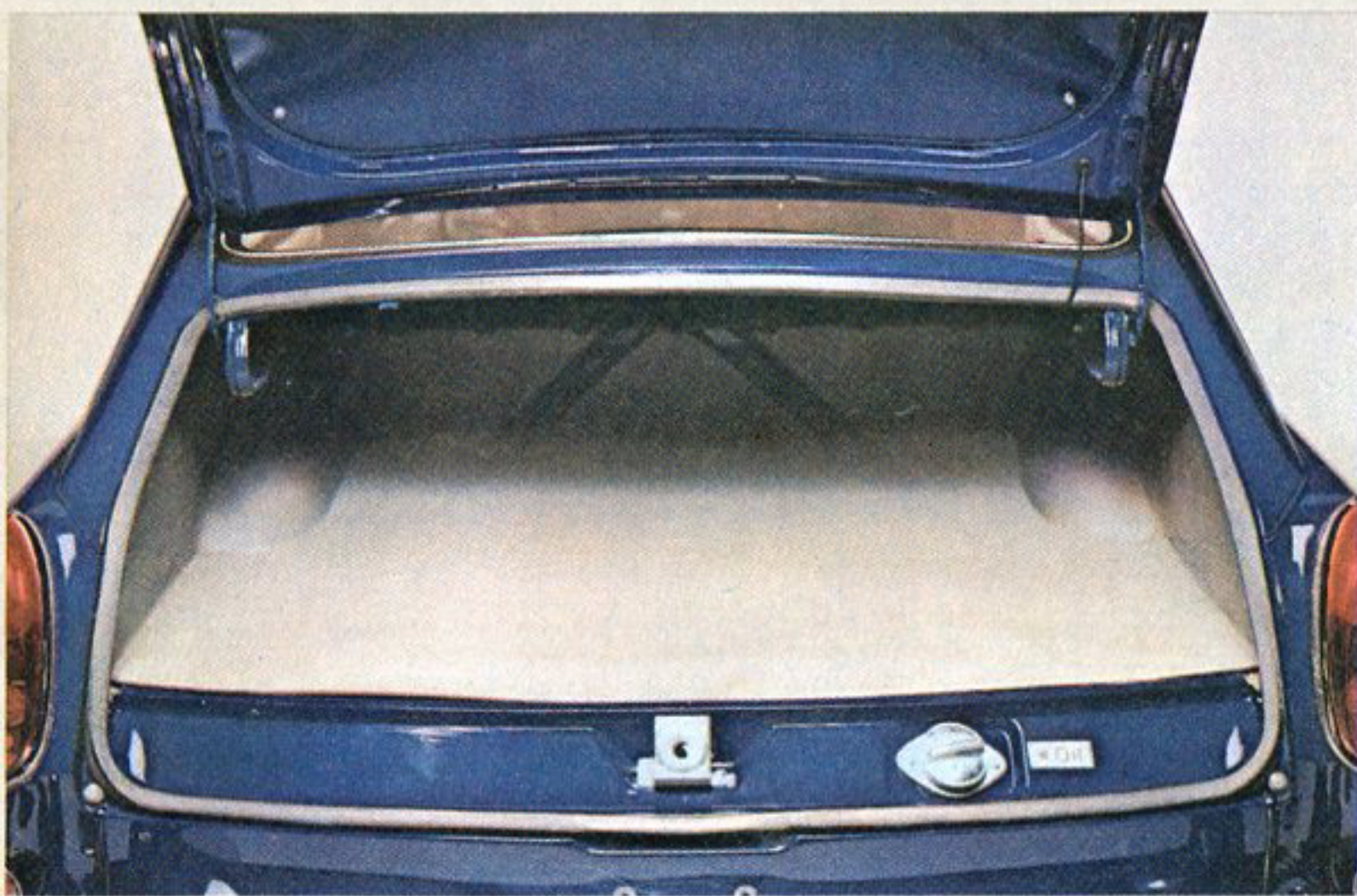
The button on the turn signal lever controls the high and low headlight beams. To dip your lights for an approaching car, just squeeze. No more fishing around on the floor with your foot to find a button.



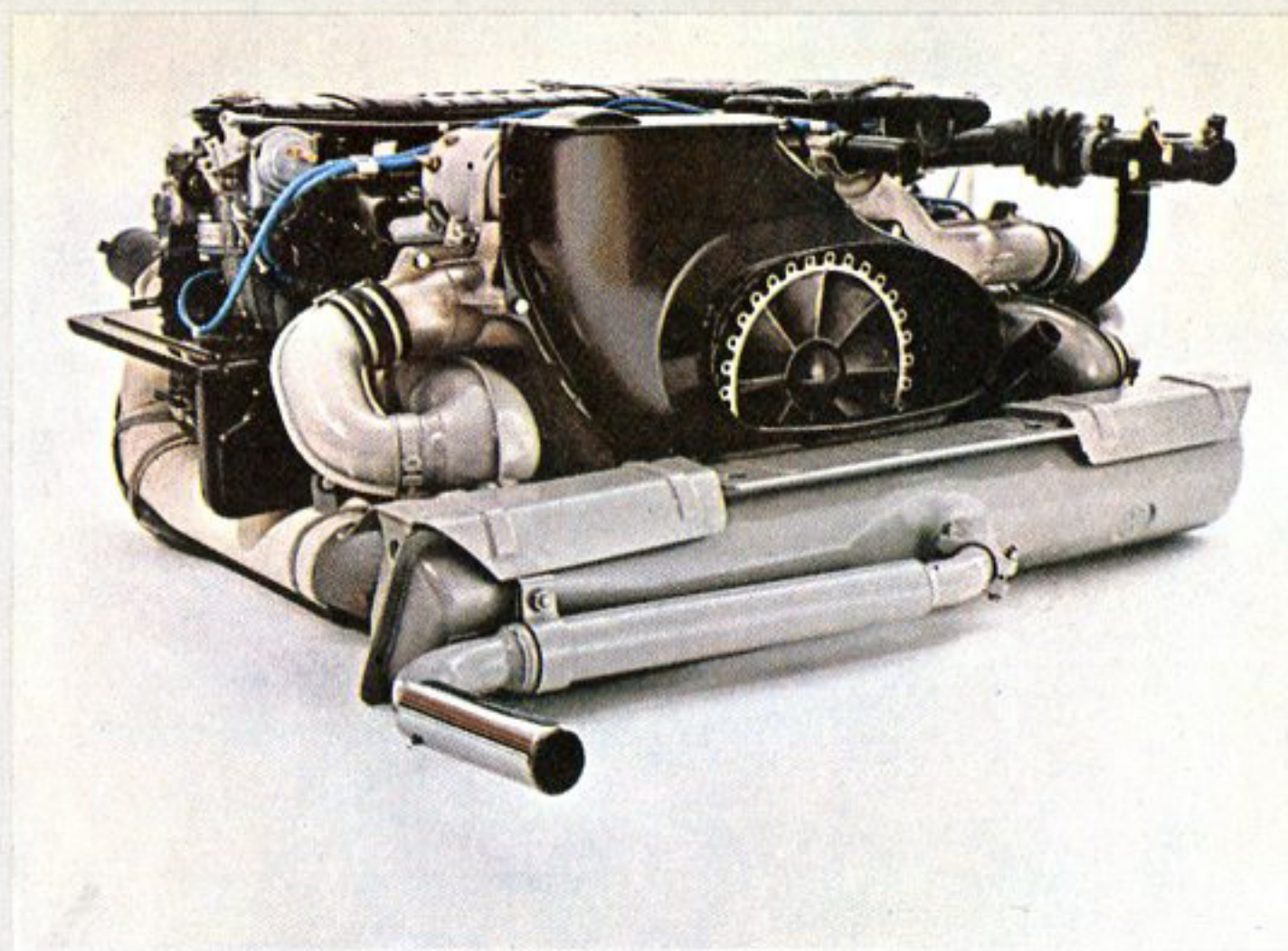
The bucket seats adjust in seven positions, front to rear. The seat backs recline at seven angles. 49 possible seating positions in all.



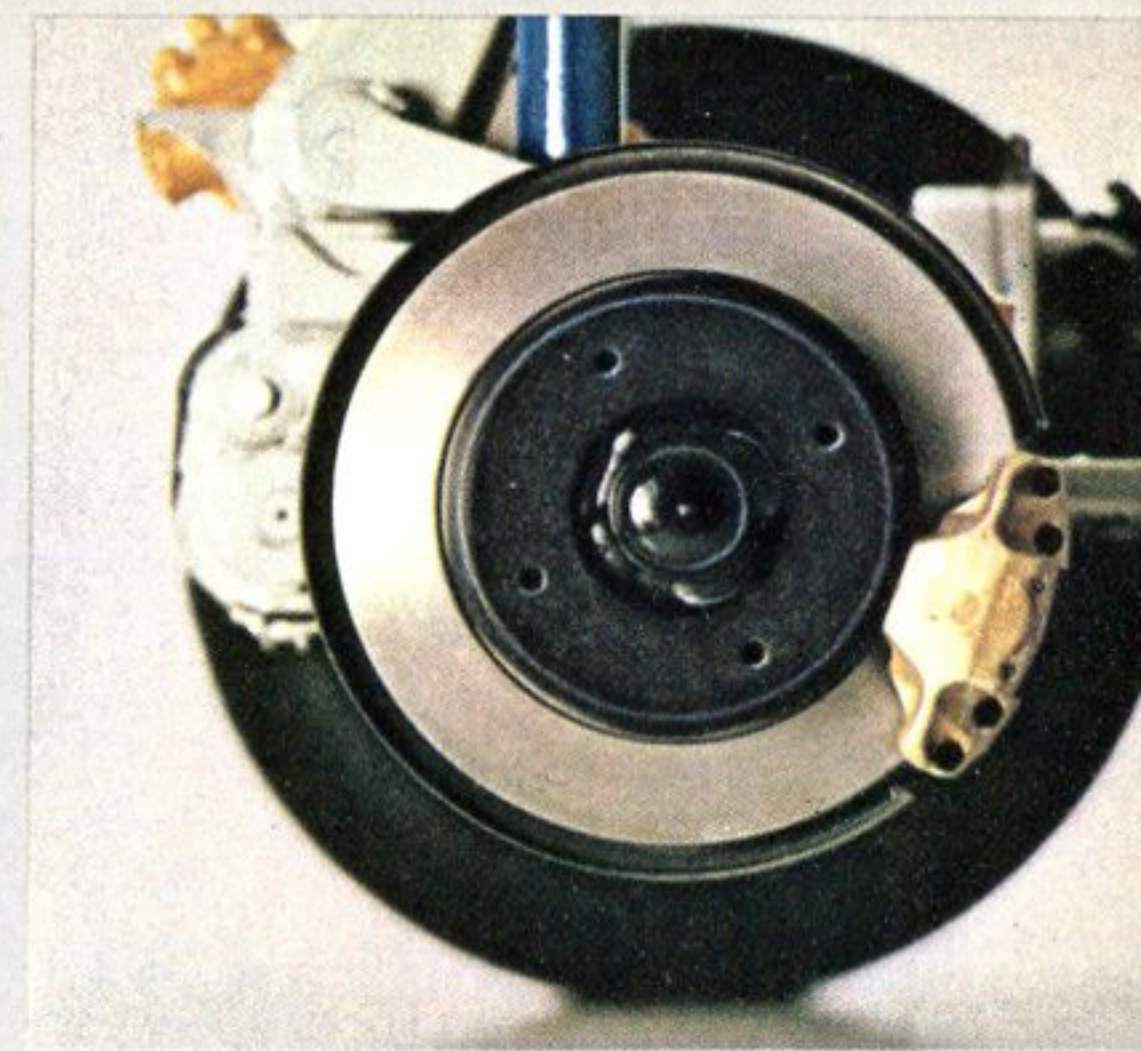
A sliding sunroof gives you 390 sq. in. of sunshine overhead. Plus the protection of a steel roof when you crank the sunroof closed. An optional extra.



The engine is under the floor of the 10.5-cu.-ft. rear luggage compartment. To check the oil without unpacking the trunk, unscrew the oil cap. (It sits underneath the back door.) A dip stick's attached.



The 4-cylinder engine is cast of light aluminum and magnesium alloys to eliminate dead weight. Pistons travel a short distance at slow speeds to cut down engine friction, lengthen engine life.



You get even stops, less brake fade with front wheel self-adjusting disc brakes. They're standard equipment.

The Fastback is a five-passenger sedan with headroom, legroom and elbowroom to spare. Everything inside—upholstery, door panels, side trim, dashboard padding, hair cord carpeting, steering wheel—matches everything else in color. (You choose what the color will be.) Safety notes: seat belt mounting points are installed for both frontseats and rear bench seat. Once the doors are closed, the frontseat backrests automatically lock to prevent them tilting forward. So if you make a sudden stop, backseat passengers and/or luggage can't push the frontseat passengers forward.



Engine

Type: 4-cylinder, 4-stroke, O.H.V.-type VW engine, rear-mounted./Bore: 3.37 in. Stroke: 2.72 in./Displacement: 96.66 cu. in. 65 HP at 4,600 RPM. S.A.E./Compression ratio: 7.7:1/Piston speed: 1923 FT/MIN. 1811 at maximum speed./Crankshaft: four-bearing type./Lubrication: pressure feed by gear pump. Oil cooler in air stream and oil pressure relief valve in crankcase./Oil capacity of crankcase: 5.3 pints./Cooling: air-cooled by a crankshaft-mounted fan./Fuel delivery: diaphragm pump with heat-insulating plastic cap./Carburetors: two SOLEX downdraft carburetors 32 PDSIT with automatic choke and accelerator pump./Air cleaner: oil-bath type with preheated air intake.

Electrical System

Battery: 6 volt, 77 amp. hours./Generator: 200 watts, with voltage regulator./Windshield washer: pneumatic system with pressurized water container as standard equipment.

Final Drive

Clutch: single plate, dry./Transmission: fully synchronized gear box. 4 forward speeds, 1 reverse./ Gear ratios: 1st—4th gears: 3.80:1, 2.06:1, 1.32:1, 0.89:1. Reverse: 3.88:1. Differential: 4.125:1./Final drive: power transmitted through differential and swinging half shafts to the rear wheels./Oil capacity: 6.4 pints in transmission case.

Chassis

Frame: semiunitized body with platform frame./Front axle: rubber-mounted. Independent suspension by two trailing arms on each side, extra-long horizontally crossed torsion bars. Four large rubber stops to prevent excessive wheel movement. Double-acting telescopic hydraulic shock absorbers. Stabilizer./Rear axle: rubber-mounted in subframe. Independent suspension by trailing arms and swinging half shafts. Two transverse torsion bars. Rubber stops and shock absorbers as in front axle./Steering: worm-and-roller-type, self-centering, with maintenance-free tie rods and hydraulic steering damper./Turning circle: 36.5 ft., 2.8 turns of steering wheel from lock to lock./Ignition: non-repeat lock type./Tires: tubeless 6.00 x15, low-profile type./Brakes: hydraulic foot brake operating on all four wheels, disc brakes at front. Transparent brake fluid reservoir./ Handbrake: mechanical, acting independently on rear wheels./Fuel tank: under front luggage compartment. 10.6 gal. capacity.

Body

Doors: two doors, 42.1 in. wide each. Can be locked from outside and inside. Large pockets and padded armrests./Rear door: maximum width

42.7 in., max. height 25.4 in. Lockable push-button lock./Windows: safety glass.Windshield has three defrosters and two fresh-air vents./Bucket seats: two in front. Adjust back and forth in seven positions.

Backrests adjust at seven angles. Backrests automatically locked to prevent them tilting forward./Rear seat: armrests on quarter panels./Safety belt anchor points./Heating: two openings at foot level in front. Two vents at foot level in rear. Three defroster vents below windshield. Two adjustable fresh-air vents under dashboard. Three operating levels on the instrument panel./Optional at extra cost: steel sliding sunroof. Whitewall tires.

Dimensions

Wheel base: 94.5 in./Track: front 51.6 in., rear 53.0 in./Length: 166.3 in./Width: 63.2 in./Height: 58.1 in.

Weights

Shipping weight: 2028 lbs./Payload: 882 lbs./Total weight: 2910 lbs.

Performance

Maximum and cruising speed: 84 mph./Climbing ability: (with half payload) 1st gear—41.5%, 2nd gear—21.5%, 3rd gear—12.5%, 4th gear—7.5%./Fuel consumption: 28 mpg. Acceleration: from 0 to 50 mph. in 12.5 sec.

Luggage Compartment: Front

Length	27.6 inches
Width	39.8 inches
Height	10.2 inches
Capacity	6.5 cubic feet

Luggage Compartment: Rear

Length	33.5 inches
Width	45.7 inches
Height	11.6 inches
Capacity	10.2 cubic feet
plus front luggage compartment	6.5 cubic feet
Total	16.7 cubic feet

Volkswagenwerk AG. Wolfsburg, Germany

Specifications subject to change without notice. Latest colors and interior appointments may be seen at your Authorized VW Dealer.