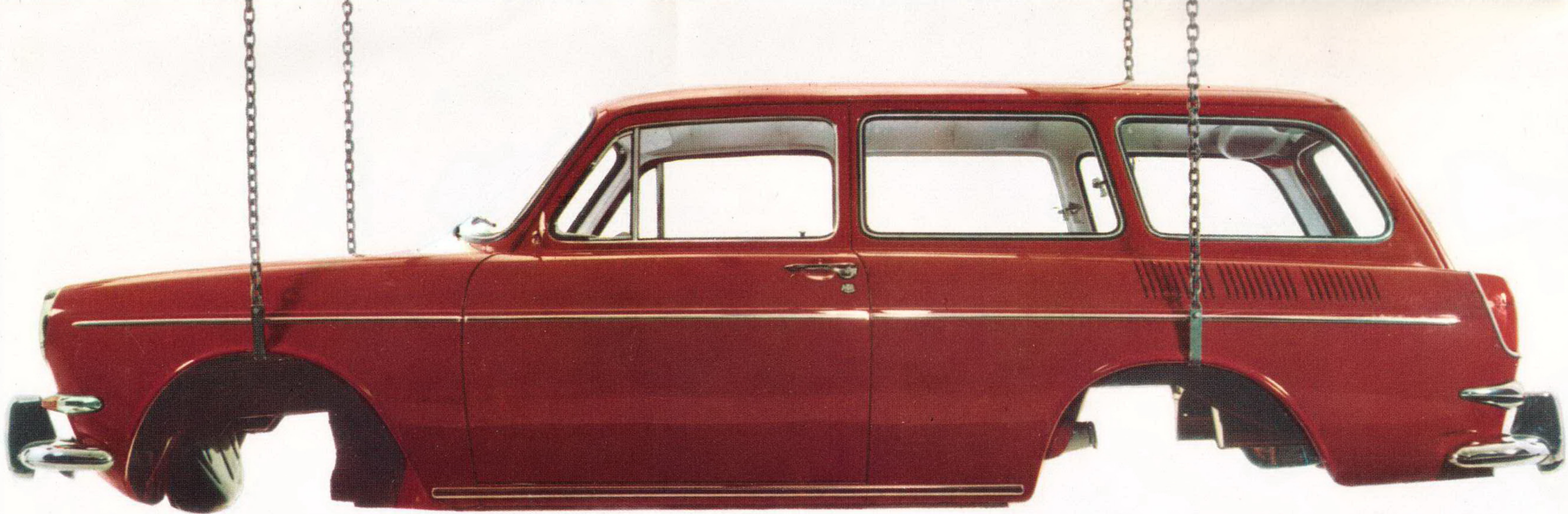




Which one suits you?

Try them b



For size, try on a VW Squareback. It looks the way it looks because we wanted to fit a lot of space inside a 5-passenger sedan. So instead of curving or sloping the back, we let out the roof line, squared off the rear end, and enclosed all the space that goes to waste above a conventional sedan's trunk.

What we ended up with is a 24.7-cu.-ft. compartment behind

the backseat. (More space than you get in most sedan trunks.) If you drop the backseat, you can carry almost twice as much.

But that's not the end of it. Up front there's a second luggage compartment. A 6.5 cubic footer.

It's a pleasant surprise. Like buying a suit and finding you get two pairs of pants.



Underneath every Volkswagen Squareback and Fastback is a sealed steel bottom and all the mechanical parts that make a VW a VW.

There's the 1584-cc. air-cooled engine. Stronger than the passenger car engine we've built but still air-cooled so it never freeze up or boil over. And still in back to give you traction when the going gets slippery.

The 4-speed synchromesh transmission that gives you control and lets you pick the most efficient and economical

both on.



For looks, step into a VW Fastback, the Volkswagen with the racy lines. We built it for people who want to be seen in a car that looks like it could hit 120. (The fact is that top speed is 84 mph like the Squareback. Which is fast enough. But you don't have to tell your neighbors.)

We also built it for families who can't see themselves in our

standard VW Sedan (the beetle) because it's too homely. Or too small. (The Fastback seats five adults with headroom, legroom, elbowroom, and baggageroom—16.7 cu. ft.—to spare.)

Is the Fastback cut out for you? You won't know until you slip into one.

Maybe, on you it'll look good.



astback is
at make a

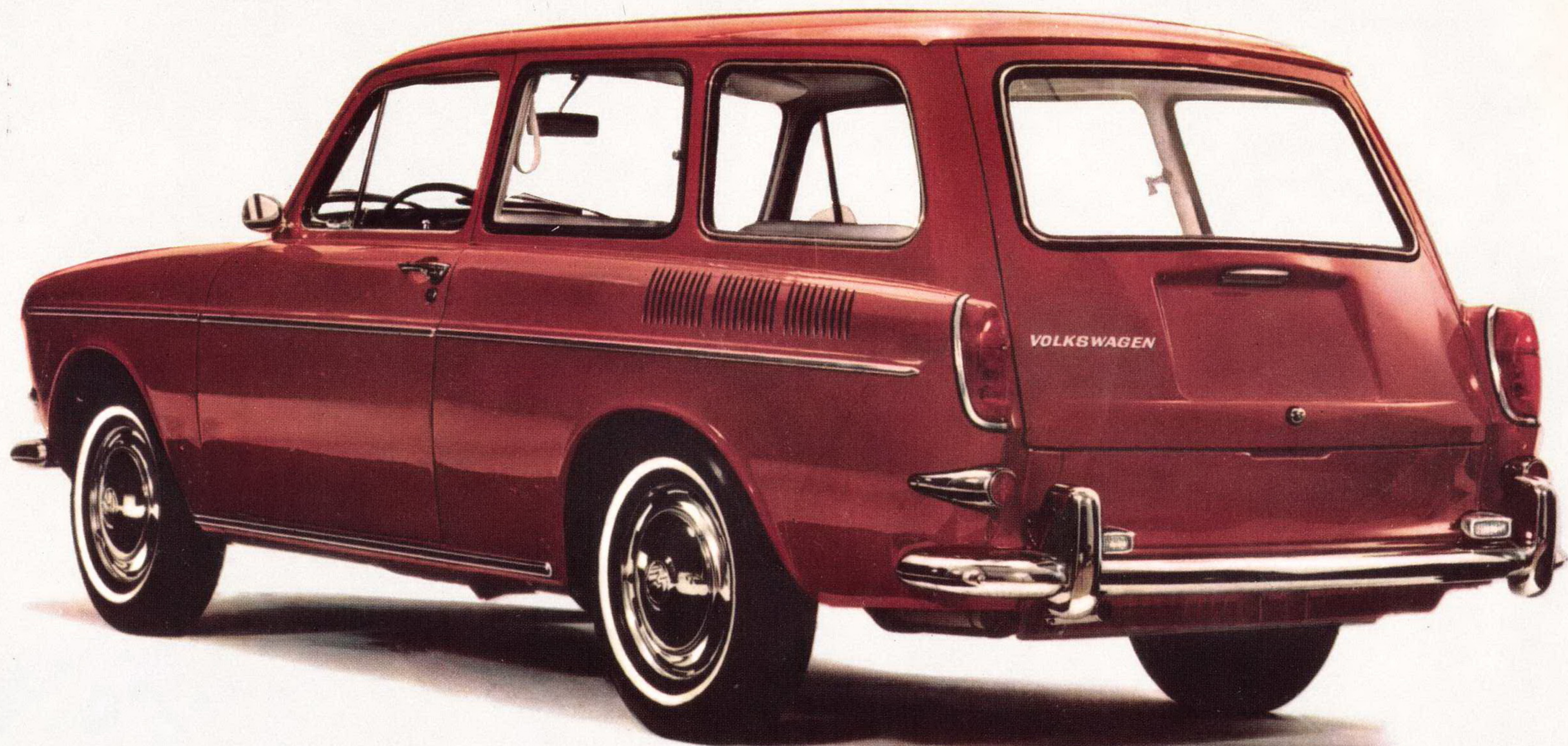
than any
so it can't
you extra

ou better
onomical

The 4-wheel independent torsion bar suspension that makes each wheel keep its bumps to itself.

And we've added some new wrinkles. A dual hydraulic brake system: drum brakes in back, self-adjusting disc brakes up front. (If one system fails, the other's there to stop the car.) Two-speed windshield wipers. A one-key system for door locks and ignition. And a 12-volt electrical system.

You get these features whether you get a Squareback or a Fastback.



The Squareback and Fastback are both Volkswagens. So when we tell you they average about 27 miles on a gallon of regular gas it shouldn't surprise you. And about 35,000 miles on a set of tires won't shake you up. And never having to buy anti-freeze or pay for radiator repairs won't raise your eyebrows.

But would you believe you get a fresh air heater/defroster, a pneumatic windshield washer, padded cowling around the instruments, a padded dashboard to reduce reflection and glare, padded sun visors, two spacious door pockets, two

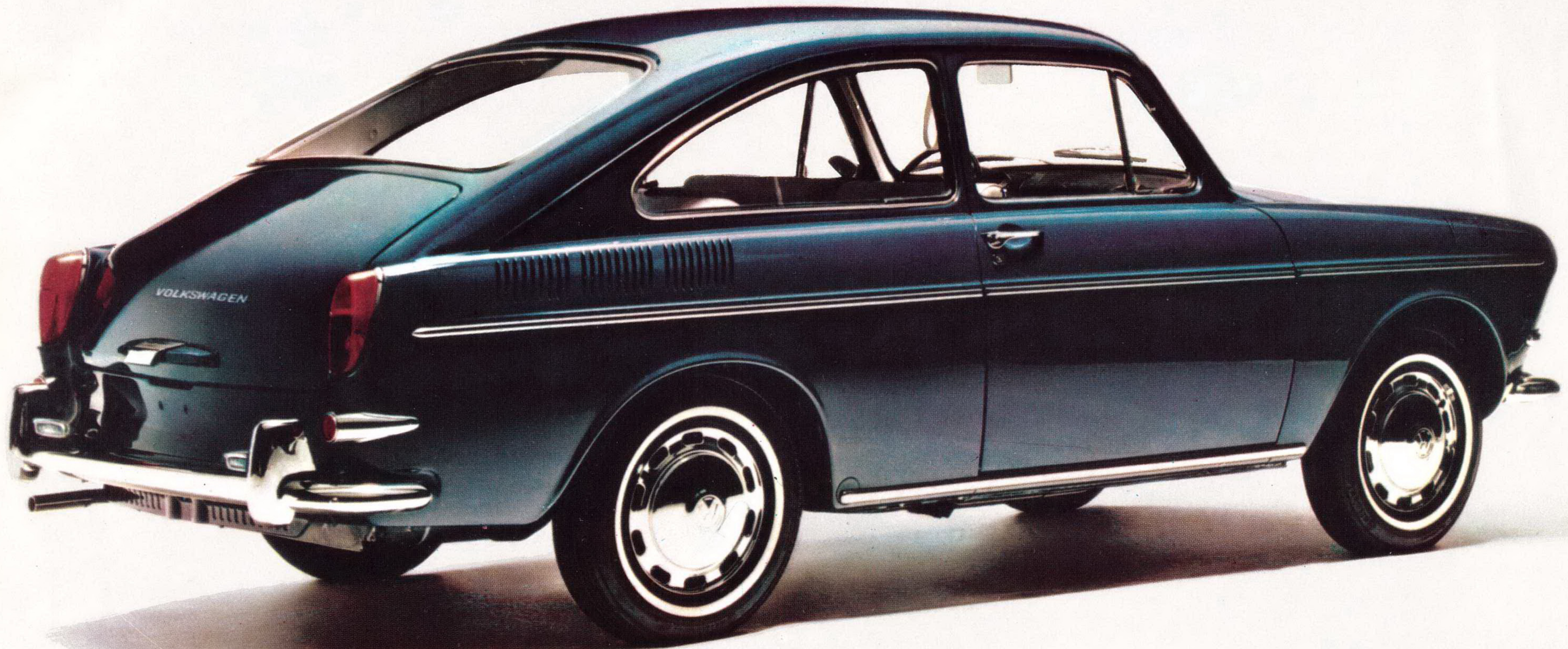
bucket seats up front, hinged rear side windows, a tinted rear window (on the Fastback only), a frontseat passenger grab handle, two backup lights, and an electric clock . . . all as standard equipment?

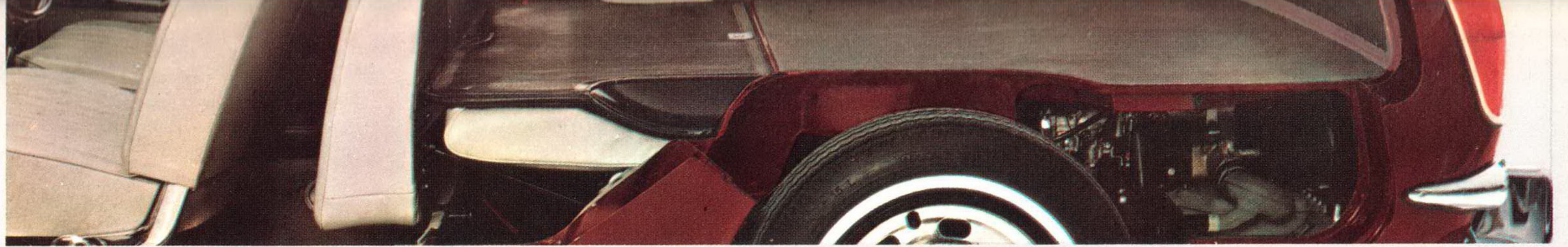
It's true.

These comforts and conveniences (and all but one shown below) come with every VW Squareback or VW Fastback we sell.

At no extra greenbacks.







Pull down the Squareback's backseat and you almost double the load area. (From 24.7 cu. ft. to 42.4 cu. ft.) Now you've got a container 65 inches long, 48 inches wide and 31 inches

high. The floor and roof are flat. It's almost like the inside of a packing case. That's why you can pack more into it than in any conventional sedan trunk.



The Squareback's back door is a 42.7" x 25.4" rectangle. It opens up a luggage compartment that's absolutely flat. And a cinch to pack.



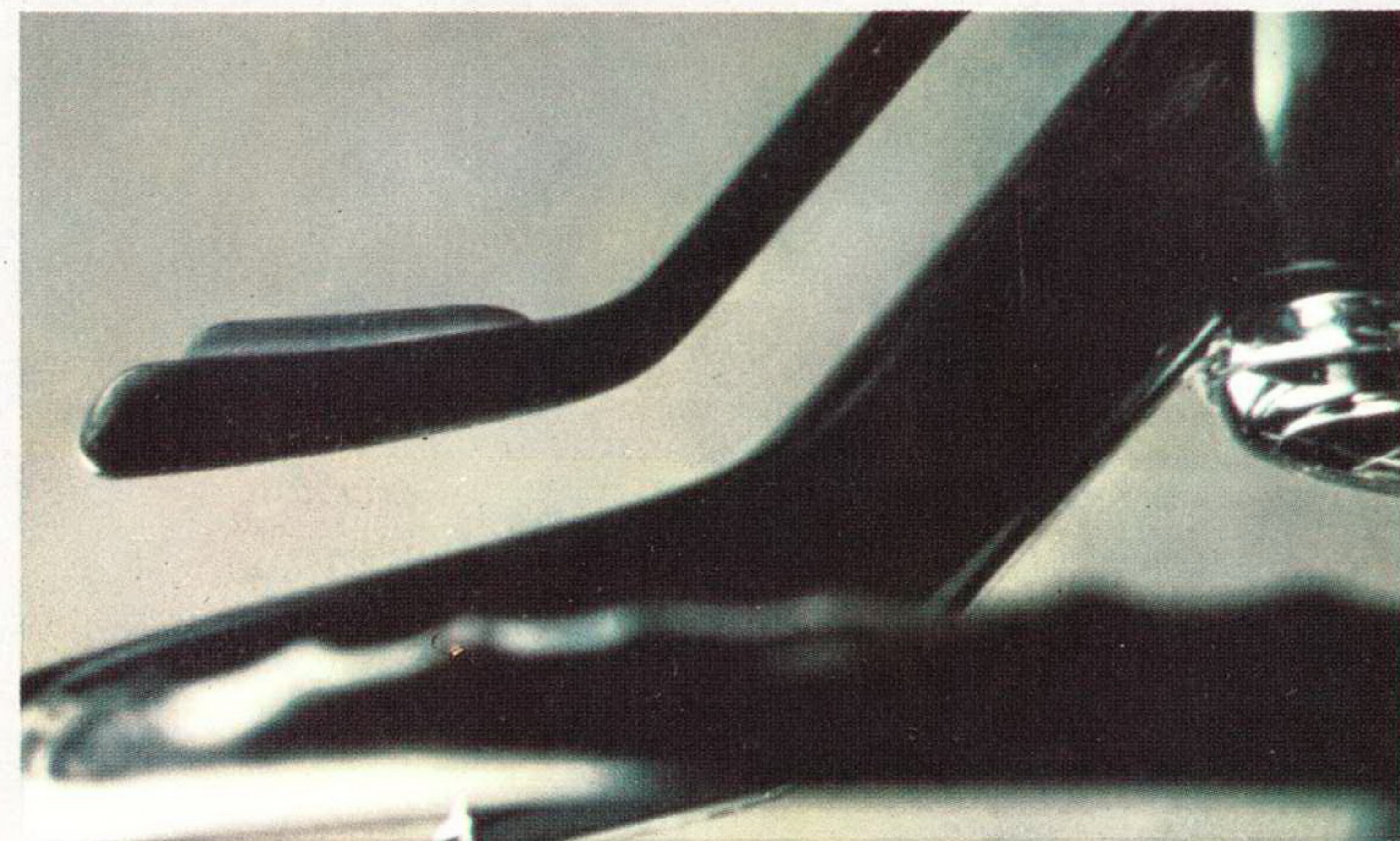
Door handles are recessed. And dashboard knobs and window-crank knobs are flattened out and made of soft rubber.



Up front: the spare tire (you can use it as a luggage to change a flat), a container for brake fluid and v



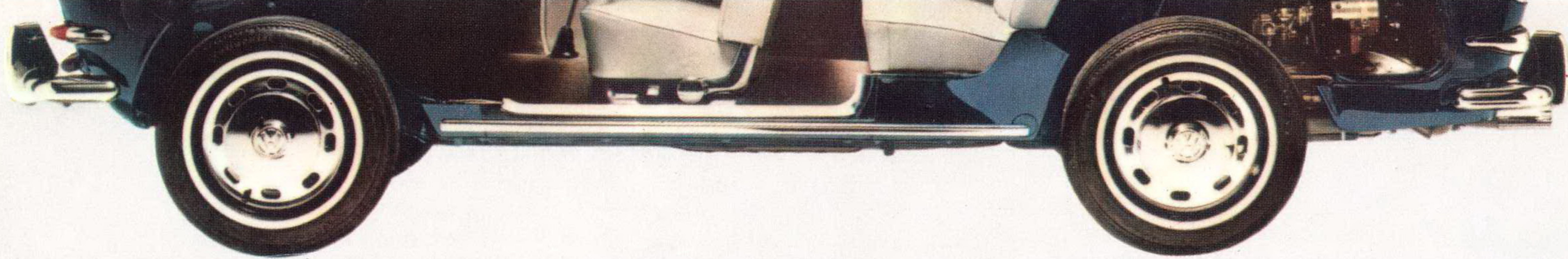
A sunroof gives you 455 sq. in. of sunshine overhead. Plus the protection of a steel roof when you crank it closed. An optional extra.



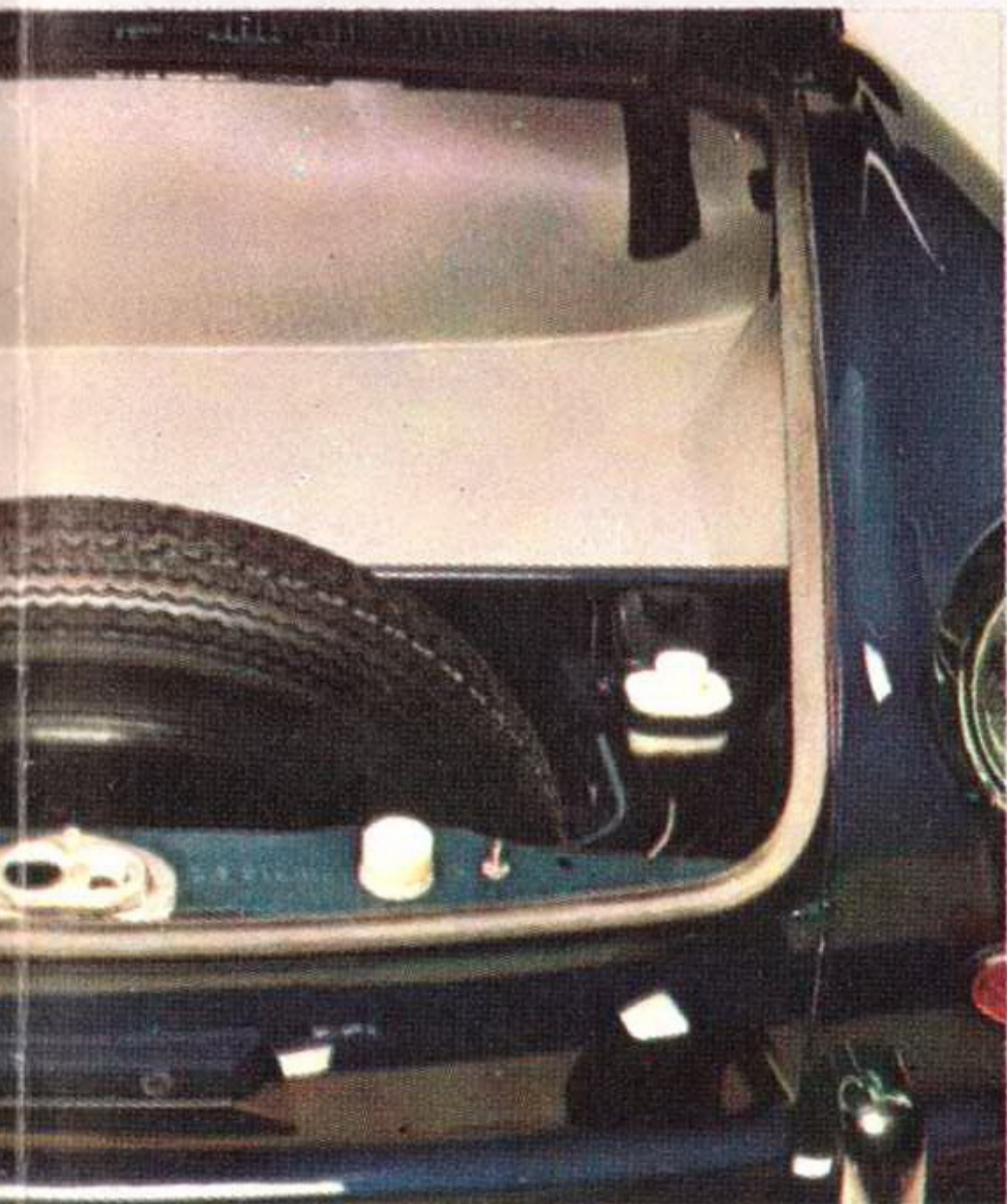
The button on the turn signal lever controls the high and low headlight beams. To dip your lights, just squeeze. No more tromping around with your foot to find a button.



Pull out the metal guard to protect the



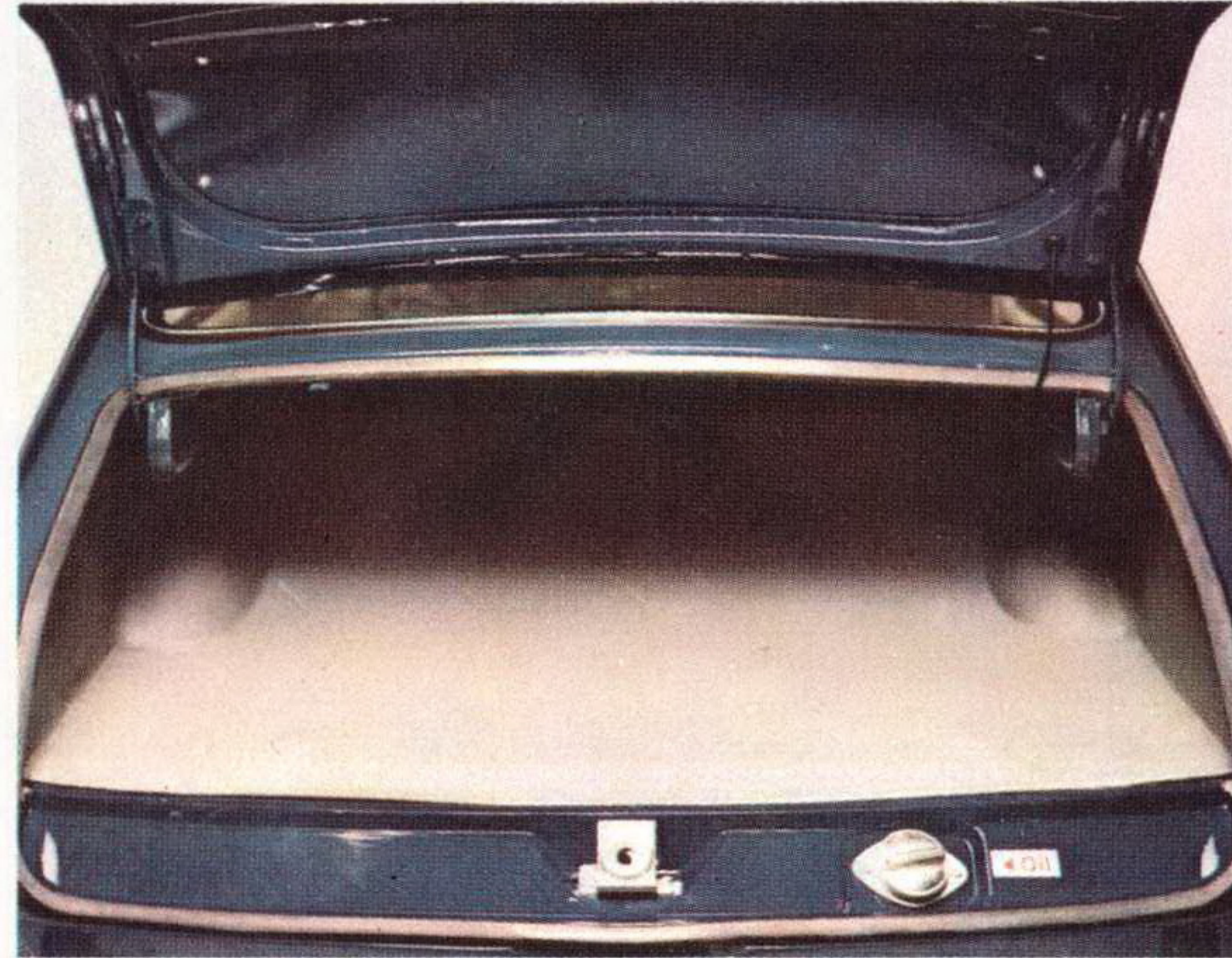
You'll find these additional safety features in the Fastback (in the Squareback, too): frontseat retractable lap belts, shoulder harness mounting points, points for backseat lap belts, and frontseat backrests that lock in place once the doors are closed. In case of a sudden stop, backseat passengers can't push frontseat passengers forward.



...e (you don't have to unload at), and see-through plastic and windshield-washer water.



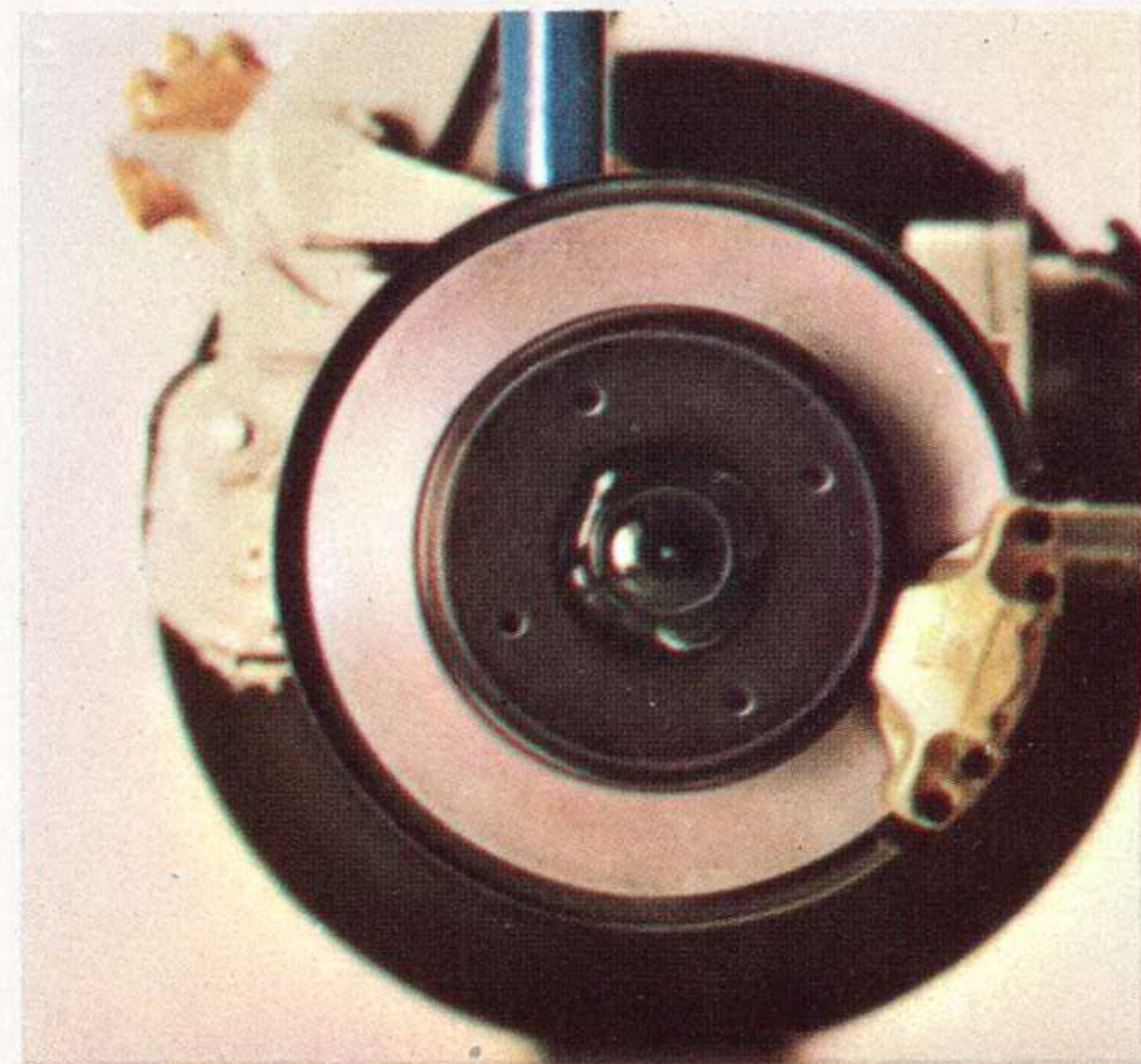
Bucket seats adjust in 7 positions front to rear. Seat backs recline at 7 angles. 49 combinations in all.



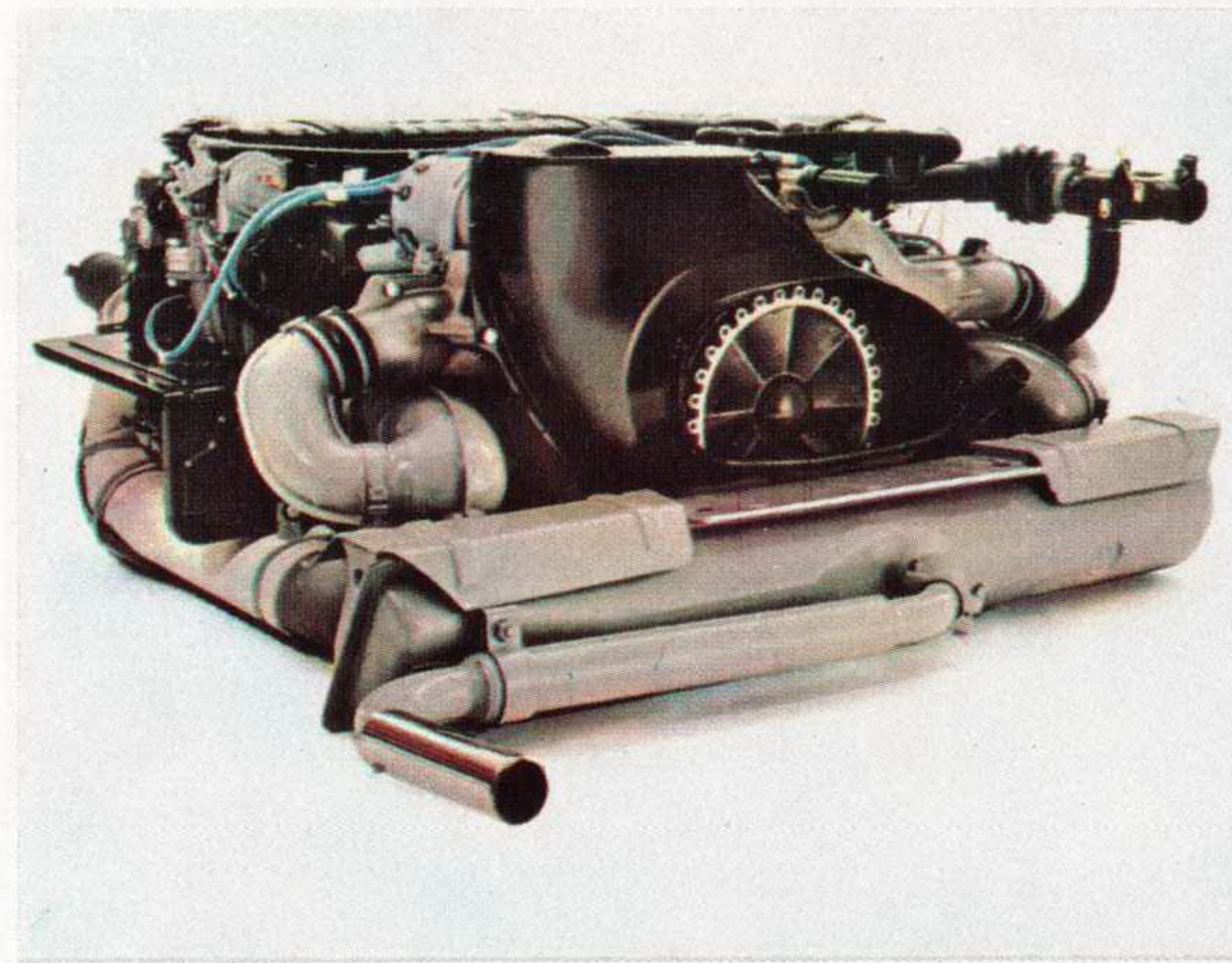
The engine is under the Fastback's 10.2-cu.-ft. rear trunk but the oil cap (dipstick attached) is *outside* the engine compartment.



...out the ashtray in the dash and guard pops up. A neat touch ect the finish and upholstery.



Front wheel self-adjusting disc brakes are half of the dual brake system. They're standard equipment.



No dead weight in this 270-lb. engine: it's cast of aluminum and magnesium alloys. That's one reason you should get about 27 miles to a gallon.

SPECIFICATIONS

Engine

Type: 4-cylinder, 4-stroke, O.H.V.-type VW engine, rear-mounted./Bore: 3.37 in./Stroke: 2.72 in./Displacement: 96.66 cu. in. 65 HP at 4600 RPM. S.A.E./Compression ratio: 7.7:1/Piston speed: 1923 FT/MIN at maximum speed. 1811 at 4000 RPM./Crankshaft: four-bearing type./Lubrication: pressure feed by gear pump. Oil cooler in air stream and oil pressure relief valve in crankcase./Oil capacity of crankcase: 5.3 pints./Cooling: air-cooled by a crankshaft-mounted fan, thermostatically controlled./Fuel delivery: diaphragm pump with heat-insulating plastic cap./Carburetors: two SOLEX downdraft carburetors 32 PDSIT with automatic choke and accelerator pump./Air cleaner: oil-bath type with preheated air intake.

Electrical System

Battery: 12 volt, 36 amp. hours./Generator: 30 amp. max. with voltage regulator./Windshield washer: pneumatic system with pressurized water container as standard equipment.

Final Drive

Clutch: single plate, dry./Transmission: fully synchronized gear box. 4 forward speeds, 1 reverse./Gear ratios: 1st—4th gears: 3.80:1, 2.06:1, 1.26:1, 0.89:1. Reverse: 3.88:1. Differential: 4.125:1./Final drive: power transmitted through differential and swinging half shafts to the rear wheels./Oil capacity: 6.4 pints in transmission case.

Chassis

Frame: semiunitized body with platform frame./Front axle: rubber-mounted. Independent suspension by two trailing arms on each side, horizontally crossed torsion bars. Four rubber stops to prevent excessive wheel movement. Double-acting telescopic hydraulic shock absorbers. Stabilizer./Rear axle: rubber-mounted in subframe. Independent suspension by trailing arms and swinging half shafts. Two transverse torsion bars. Transverse auxiliary spring. Rubber stops and shock absorbers as in front axle./Steering: worm-and-roller-type, self-centering, with maintenance-free tie rods and hydraulic steering damper./Turning circle: 36.5 ft., 2.8 turns of steering wheel from lock to lock./Ignition: non-repeat lock type./Tires: tubeless 6.00 x 15, low-profile type./ Brakes: dual hydraulic foot-brake system operating on front and rear paired wheels, self-adjusting disc brakes in front. Transparent brake fluid reservoir./Handbrake: mechanical, acting independently on rear wheels./Fuel tank: under front luggage compartment. 10.6 gal. capacity.

Body

Doors: two doors, each 42.1 in. wide. Can be locked from outside and inside. Large pockets and padded armrests. (Squareback only: rear door maximum width 42.7 in., height 25.4 in. Push-button lock.) Windows: safety glass. Windshield has three defrosters and two fresh-air vents./Bucket seats: two in front. Adjust back and forth in seven positions. Backrests adjust at seven angles. Backrests automatically lock to prevent their tilting forward./Rear seat: armrests on quarter panels./Retractable

lap belts for front seats./Heating: two openings at foot level in front. Two vents at foot level in rear. Three defroster vents below windshield. Two adjustable fresh-air vents under dashboard. Three operating levels on the instrument panel./Optional at extra cost: steel sliding sunroof. Whitewall tires. Leatherette upholstery./Accessories: radio and antenna. Rear speaker. Under-dash parcel shelf. Cigarette lighter. Air conditioner. Vent shades. And more: ask your authorized VW dealer to show you his complete accessories line.

Dimensions

Wheel base: 94.5 in./Track: front 51.6 in., rear 53.0 in./Length: 166.3 in./Width: 63.2 in./Height: 58.1 in.

Weights

	Fastback	Squareback
Unladen weight	2028 lbs.	2095 lbs.
Payload	882 lbs.	992 lbs.
Total weight	2910 lbs.	3087 lbs.

Performance

Maximum and cruising speed: 84 mph./Climbing ability (with half payload): 1st—4th gears: Fastback, 46%, 24.0%, 13.5%, 8.5%; Squareback, 41.5%, 21.5%, 12.0%, 7.5%/Fuel consumption: 27 mpg. Acceleration: from 0 to 50 mph. in 12.5 sec.

Squareback Sedan

Loading compartment:

rear seat backrest up:		Fastback Sedan Luggage compartment: rear
42.5 inches	Length	33.5 inches
46.1 inches	Width	45.7 inches
31.9 inches	Height	11.6 inches
11.8 square feet	Loading area	
24.7 cubic feet	Capacity	10.2 cubic feet
	plus front luggage compartment	
6.5 cubic feet	compartment	6.5 cubic feet
31.2 cubic feet	Total	16.7 cubic feet

Loading compartment:

rear seat backrest down:		
65.7 inches	Length	
48.0 inches	Width	
31.9 inches	Height	
19.4 square feet	Loading area	
42.4 cubic feet	Capacity	
	plus front luggage compartment	
6.5 cubic feet	compartment	
48.9 cubic feet	Total	

Volkswagenwerk AG. Wolfsburg, Germany.