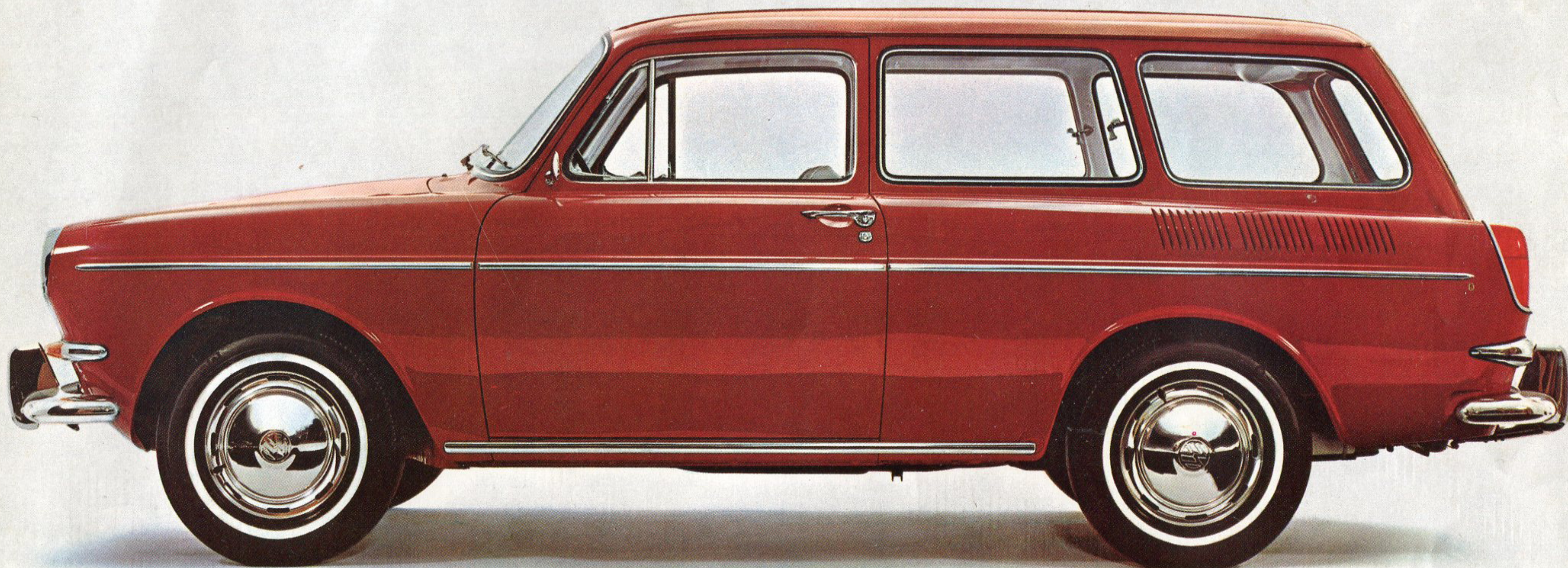


## The Volkswagen Squareback Sedan



**It doesn't look like a Volkswagen**

HICKOX MOTOR SALES, INC.  
VOLKSWAGEN SALES AND SERVICE  
DW HIGHWAY NORTH  
MANCHESTER, N. H.



The Volkswagen Squareback Sedan looks the way it looks because we wanted to fit a lot of space inside a family car.

So instead of curving or sloping the back, we extended the roof line, squared off the rear end and enclosed all the space that sits outside a conventional sedan above the trunk.

But don't let its less-than-rakish appearance fool you. The Squareback is as advanced a car as any of the 9 million Volkswagens we ever built.

Take the engine . . . if you can find it.

It's an air-cooled, 1,584 cc., 65-horsepower engine. Our most powerful passenger car engine yet. Top speed is 84 mph with this new engine.

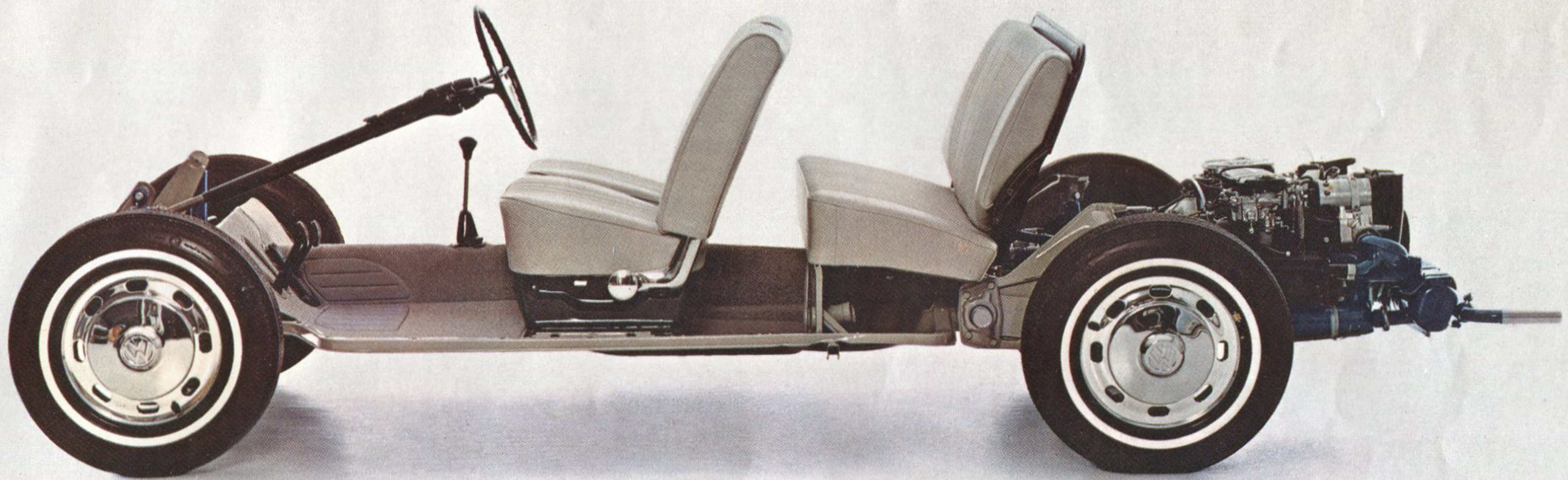
But you won't find it under the front hood. We put those 6.5 cubic feet of space to work as a luggage compartment. You won't find the engine when you swing up the back door either. What you will find is a second luggage area, this one 24.7-cubic-foot big. Larger than the trunks in most conventional sedans.

Where's the engine? It's tucked under the floor at the back of the car, pressing down its weight on the drive wheels for extra traction in mud and snow. It's the most compact engine we ever built. Just 16 inches high.

So if somebody tells you there's nothing unusual about the Squareback, you can put him in his place. Just ask him to find the engine.







## but it's sure built like one

You'll find many technical features in our newest Volkswagen that were proven in our older VW models. (In this respect, the Squareback is a throwback.)

You'll find that the flat new engine is air-cooled, not water-cooled. Since air won't freeze or boil, your Squareback will always perform reliably. Winter and summer.

The transmission is synchromesh. All four forward gears are synchronized to

make shifting easy and quiet in every gear. You can even shift down to first without stopping or clashing gears.

The wheels are independently suspended by torsion bar springs. Each wheel travels its own road and takes its lumps and bumps without passing them on to the other wheels. You'll ride smoother for it.

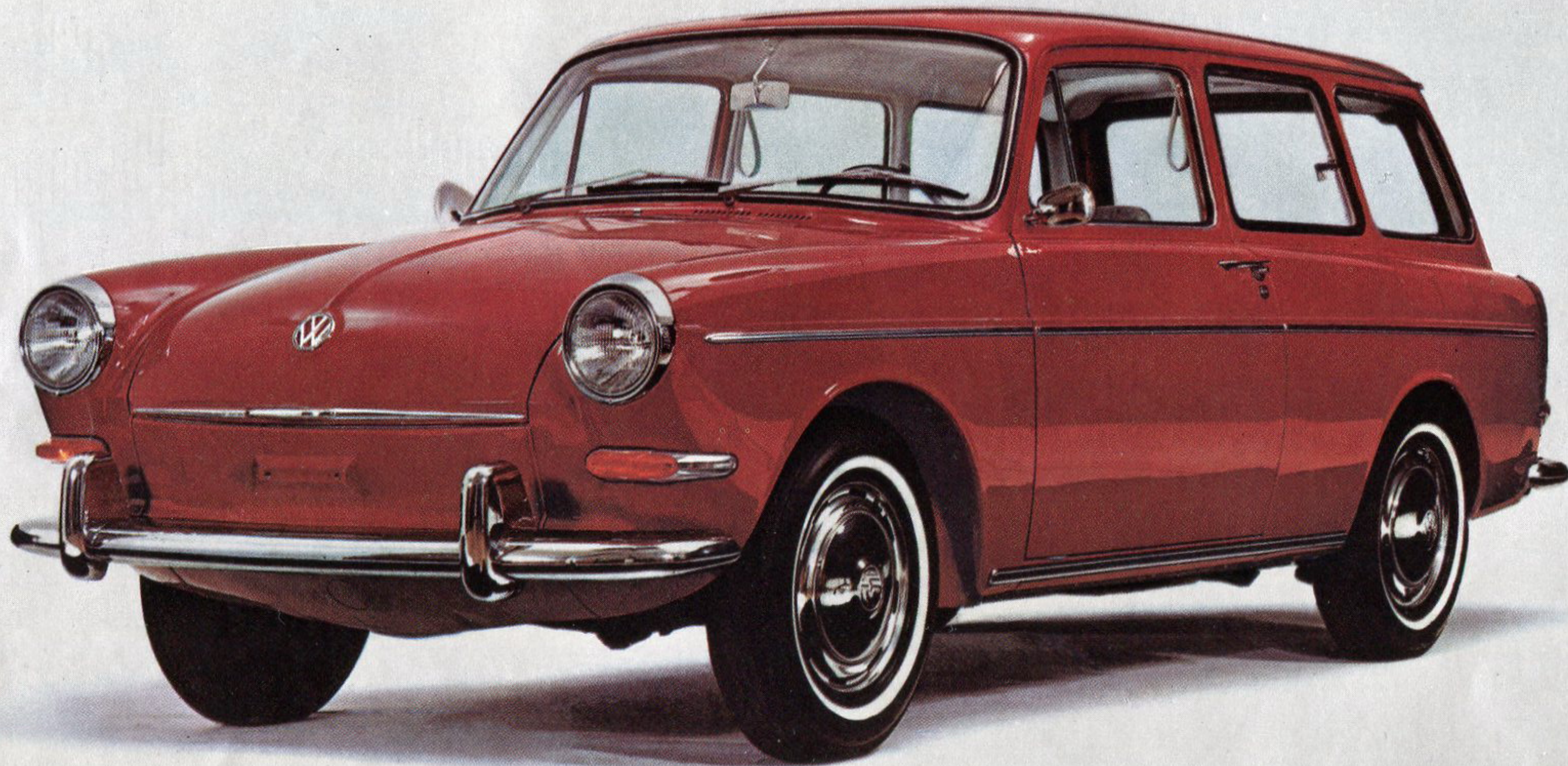
The Squareback seats five adults, two up front in individual bucket seats and three in back on the bench seat.

But for all its interior space, outside the Squareback is only six inches longer than the bug, our standard VW Sedan. So a parking space that's snug as a bug should fit the Squareback, too.

Another comforting thought: while the Squareback may be new to you, it isn't a new car. It's been in production since 1962. We've had four years to test and prove its new features.

For a look at some of those features, open the fold.





The Squareback is a  
luggage compartments  
you leave three passen  
the back seat, you can u  
driver (42.4 cubic feet)

This conversion pri  
Squareback.

So does a washable  
cowling around the in  
dashboard top to redu  
fresh-air heater/defrost  
washer; two spacious  
passenger grab handle  
extra cost.

Of course, when you  
pect to get an economy  
let you down. Average  
miles on a gallon of re  
be good for 40,000 mile  
freeze: there's no water  
You won't pay for radiat

However, there's one  
owners have to pay. An  
questions like "what kin

Tell them it's a Volks  
and they may say it  
wagon. Tell 'em that's j  
ready makes a station  
box. Tell 'em it's possi  
sibly designed sedan be



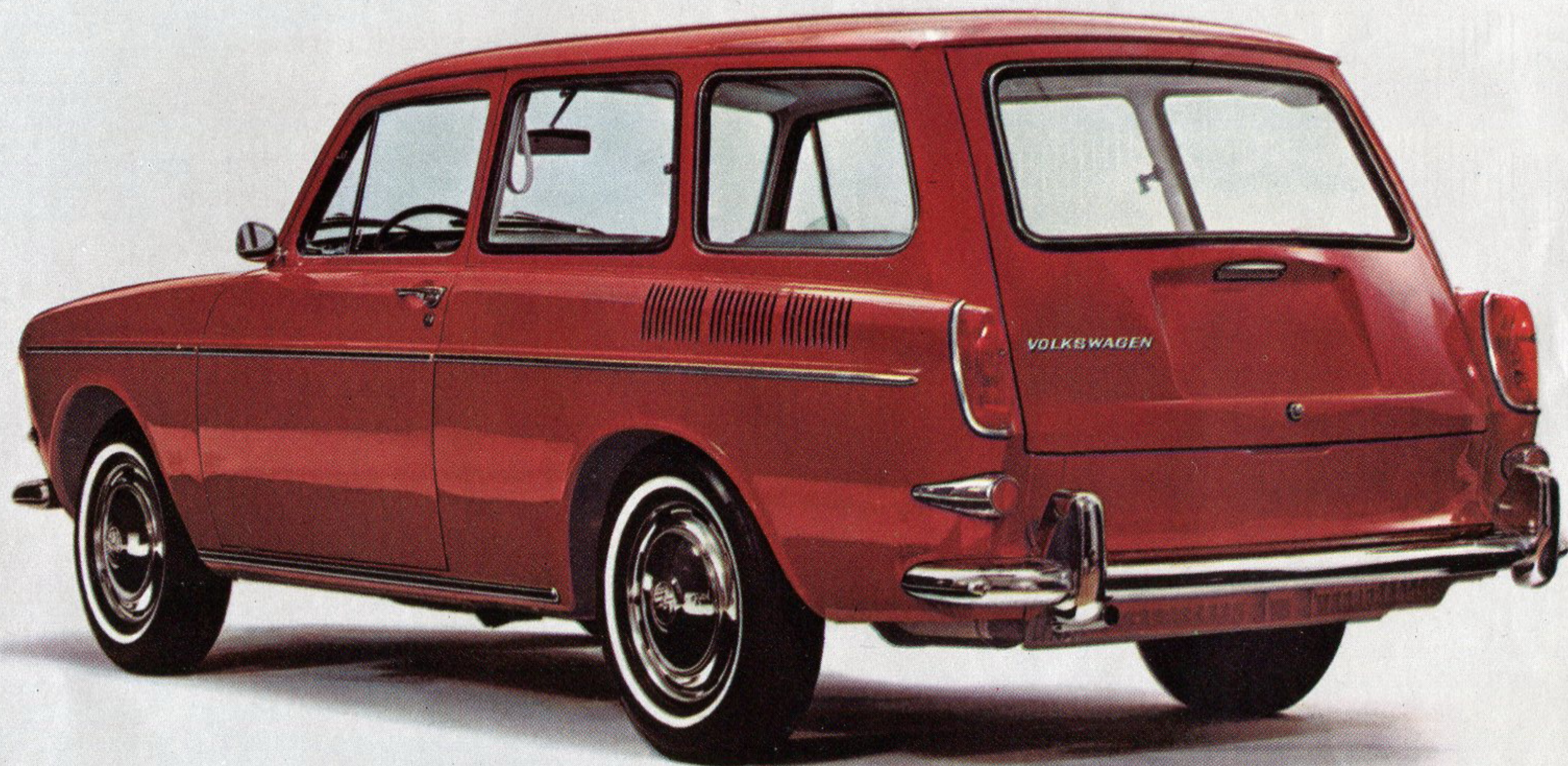
-passenger sedan with  
oming and going. But if  
rs home and fold down  
all the space behind the  
carry things.

ege comes with every

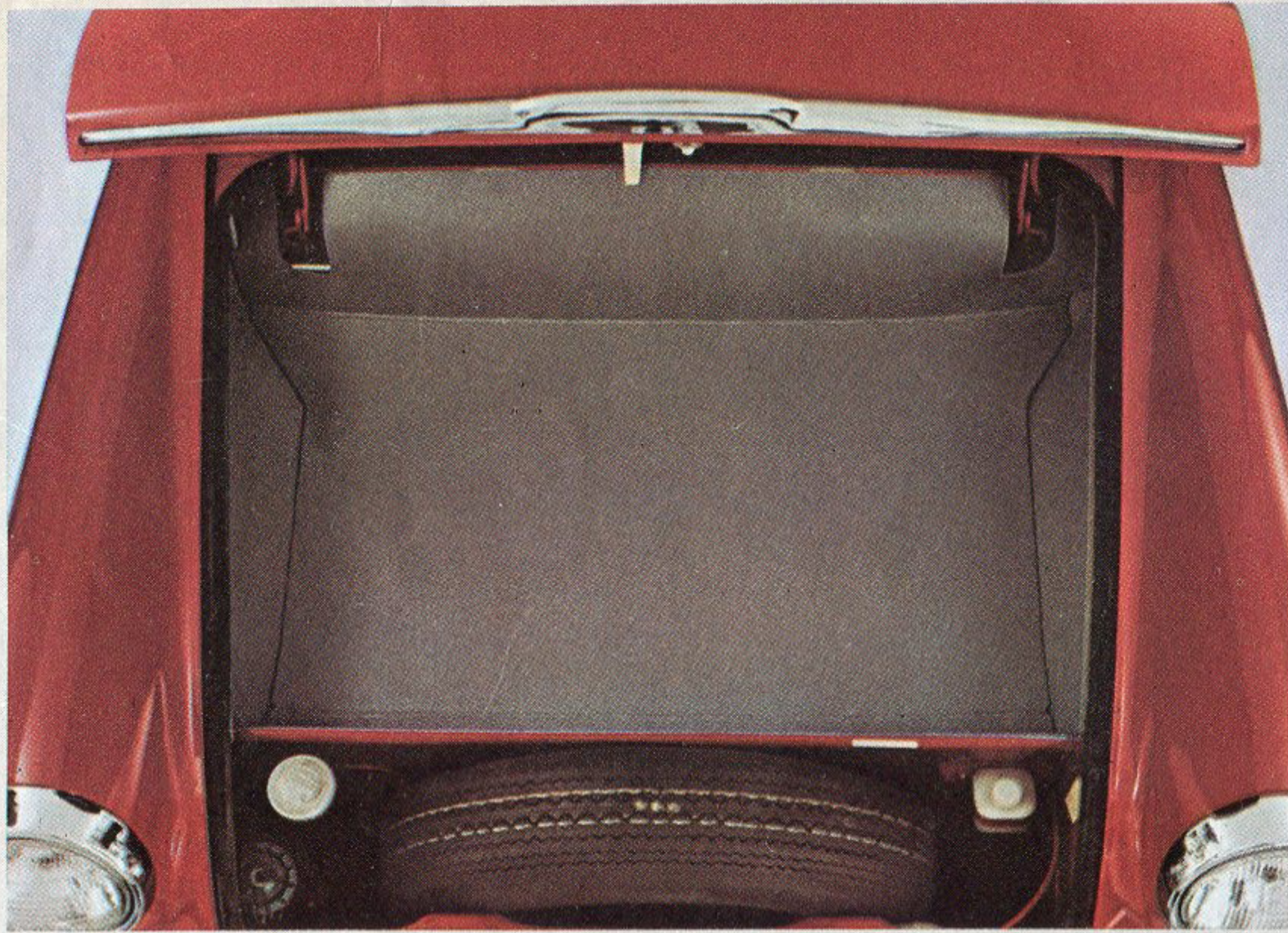
lastic interior; padded  
uments and a padded  
reflection and glare; a  
pneumatic windshield  
oor pockets; front-seat  
electric clock. All at no

y a Volkswagen you ex-  
r. The Squareback won't  
as mileage is about 28  
ar. A set of tires should  
You won't pay for anti-  
n the engine to freeze.  
r repairs: no radiator.

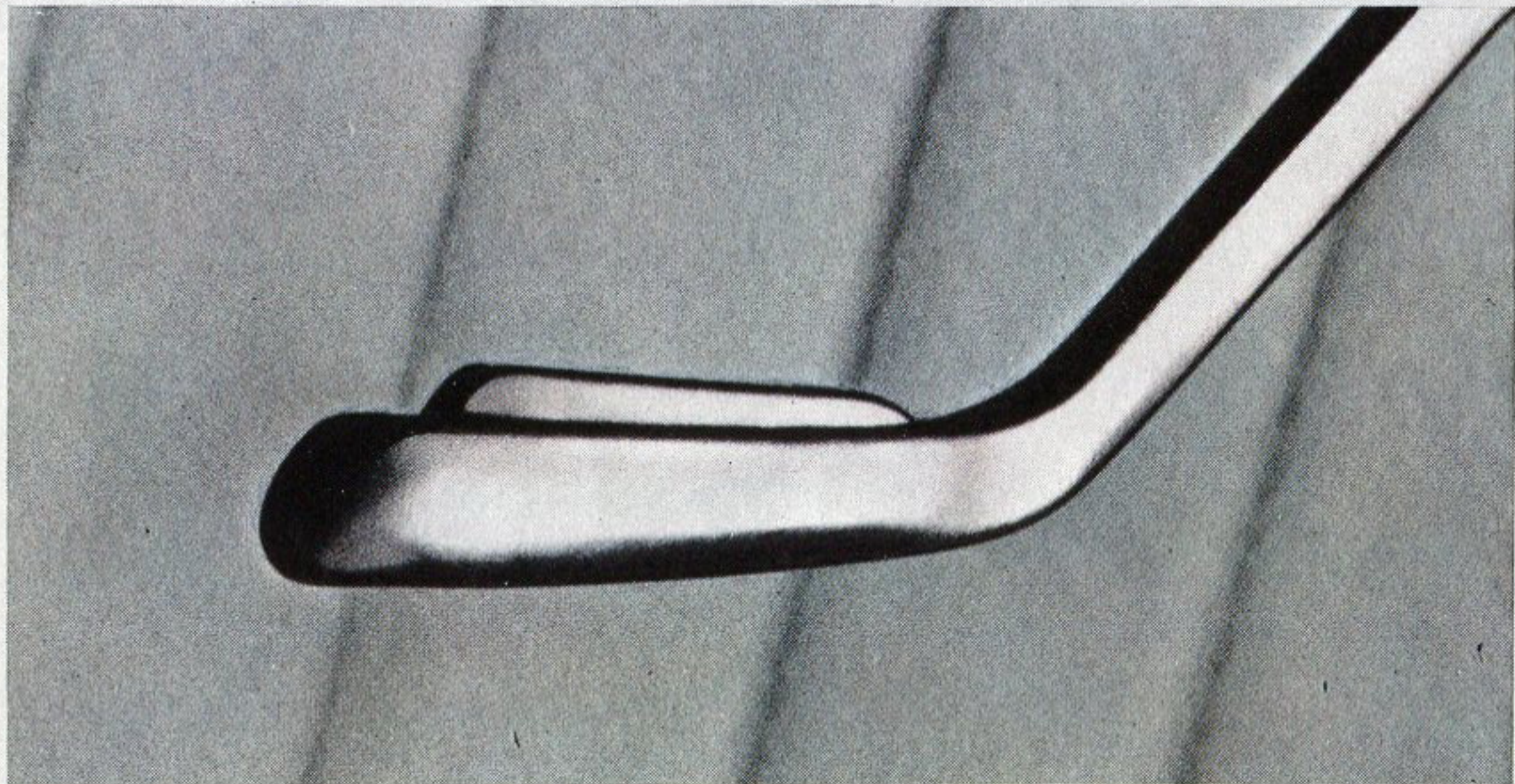
rice Squareback Sedan  
hat's answering a lot of  
f a car is that, anyway?"  
gen Squareback Sedan  
ks more like a station  
not so. Volkswagen al-  
gon and it looks like a  
they never saw a sen-  
e.



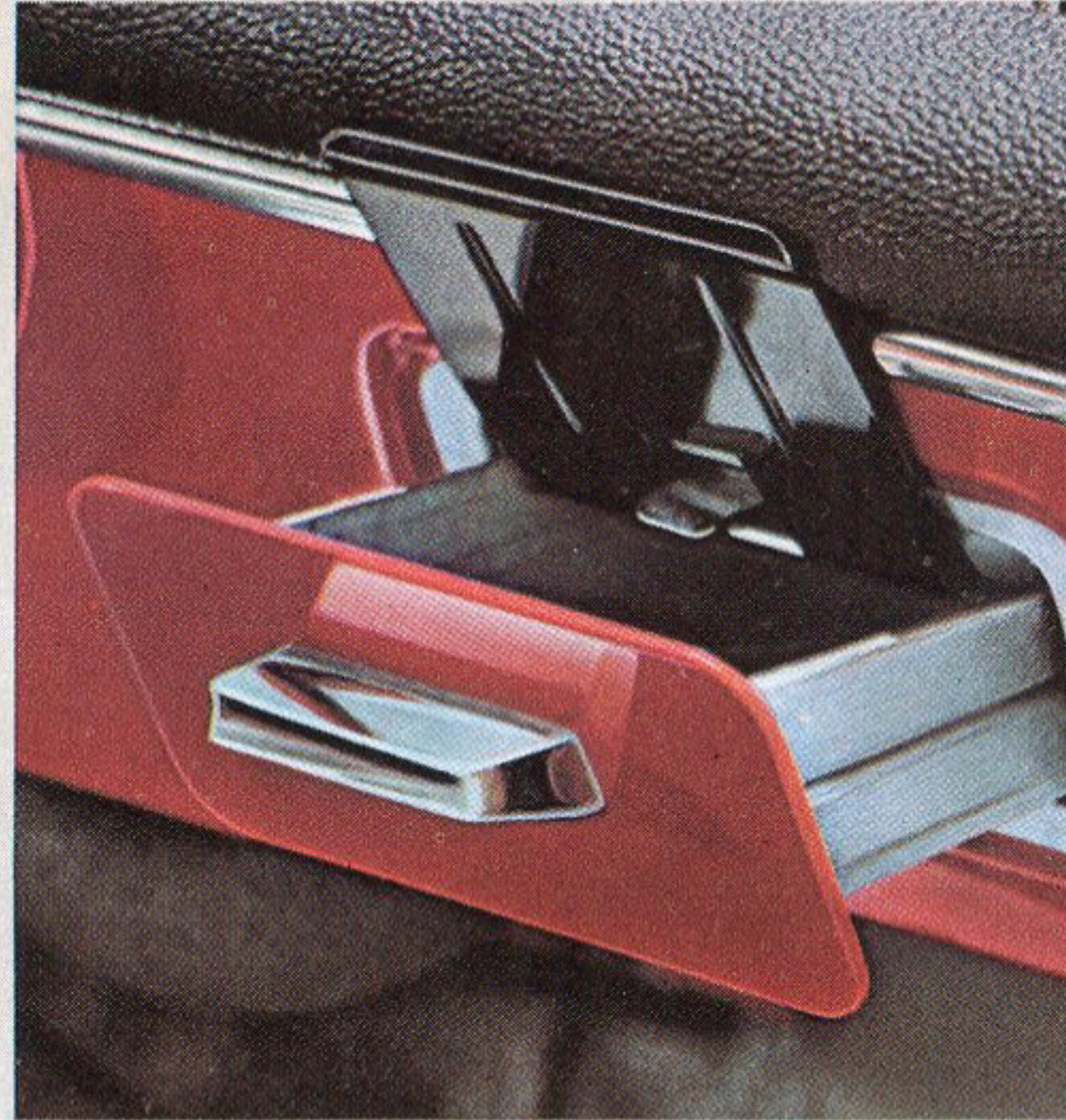




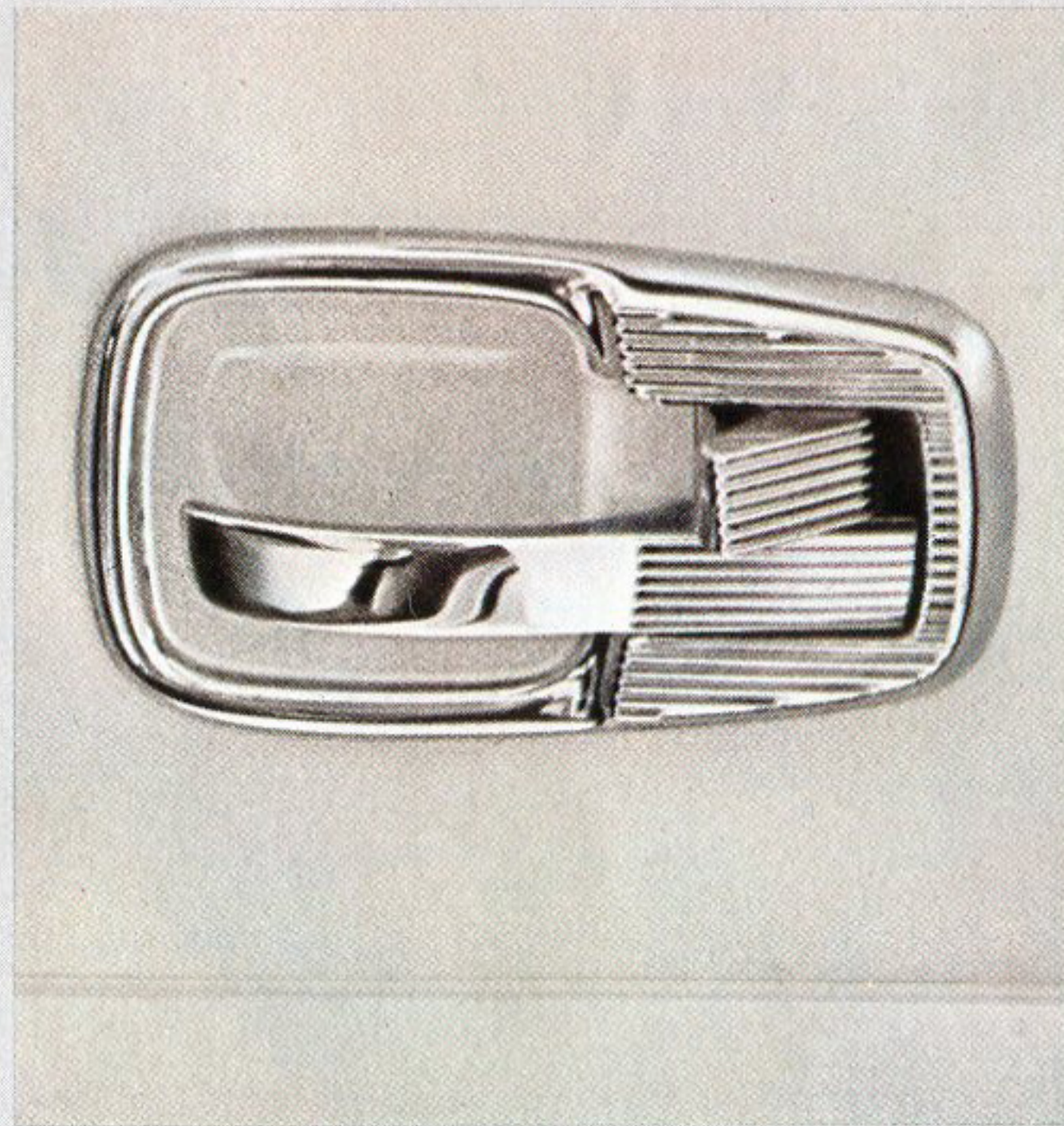
The spare tire sits in front of the forward luggage compartment. You don't have to unload to change a flat. Also up front: easy see-through plastic containers for the brake fluid and windshield-washer water.



The button on the turn signal lever controls the high and low headlight beams. To dip your lights for an approaching car, just squeeze. No more fishing around on the floor with your foot to find a button.



Pull out the ashtray in the dashboard and a metal guard pops up. A neat touch that protects the finish and upholstery.



Recessed door handles won't catch your clothing. A light one-finger touch opens them. Push the small lever to lock up.



A sliding sunroof gives you 390 sq. in. of sunshine overhead. Plus the protection of a steel roof when you crank the sunroof closed. An optional extra.

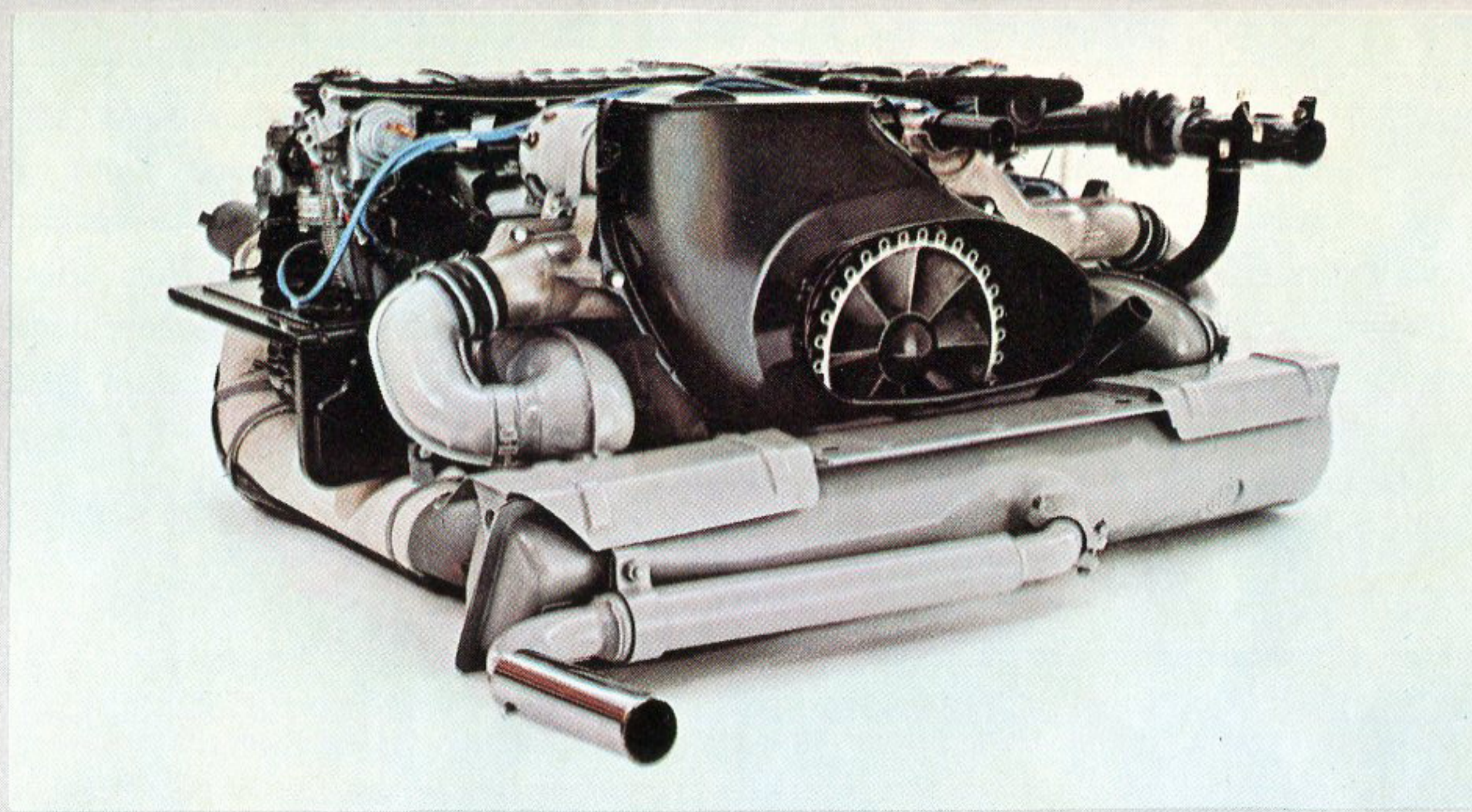


The bucket seats adjust in seven positions, front to rear. The seat backs recline at seven angles. 49 possible seating positions in all.

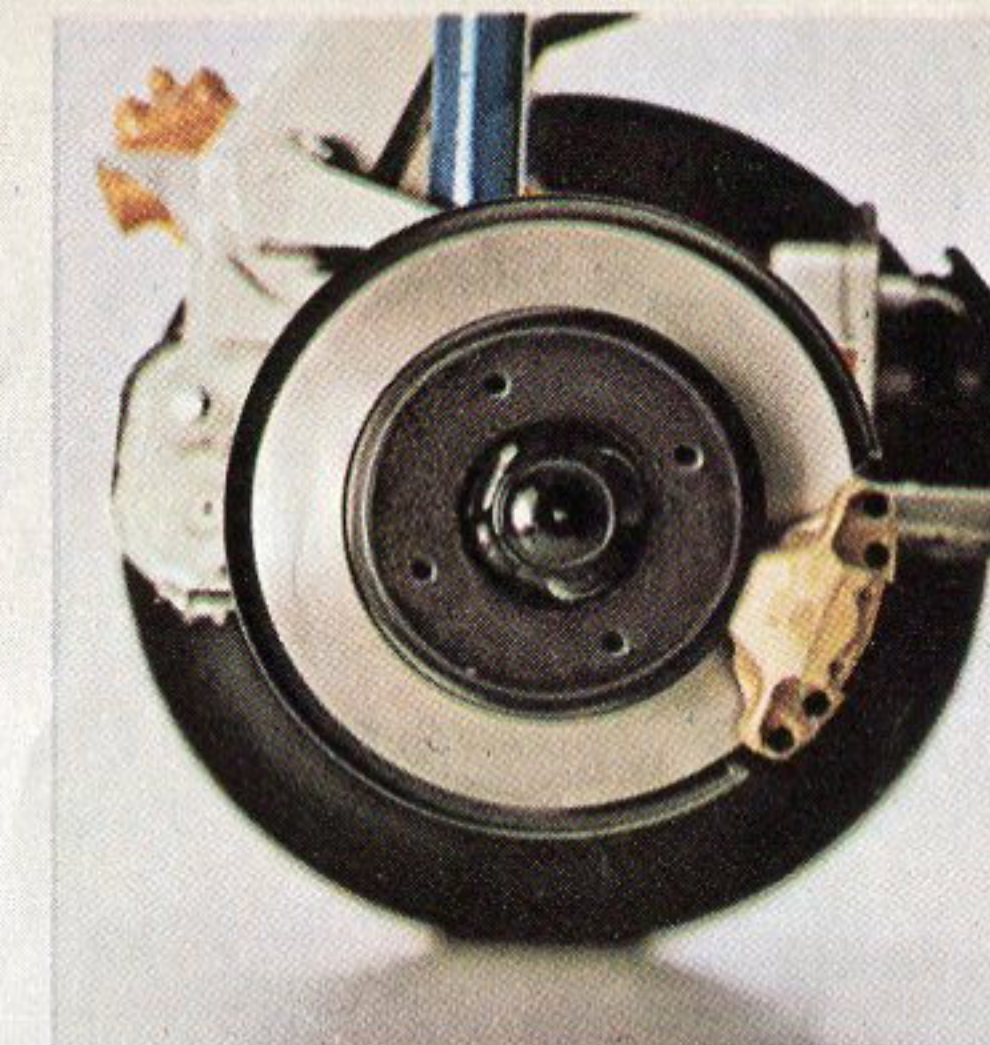




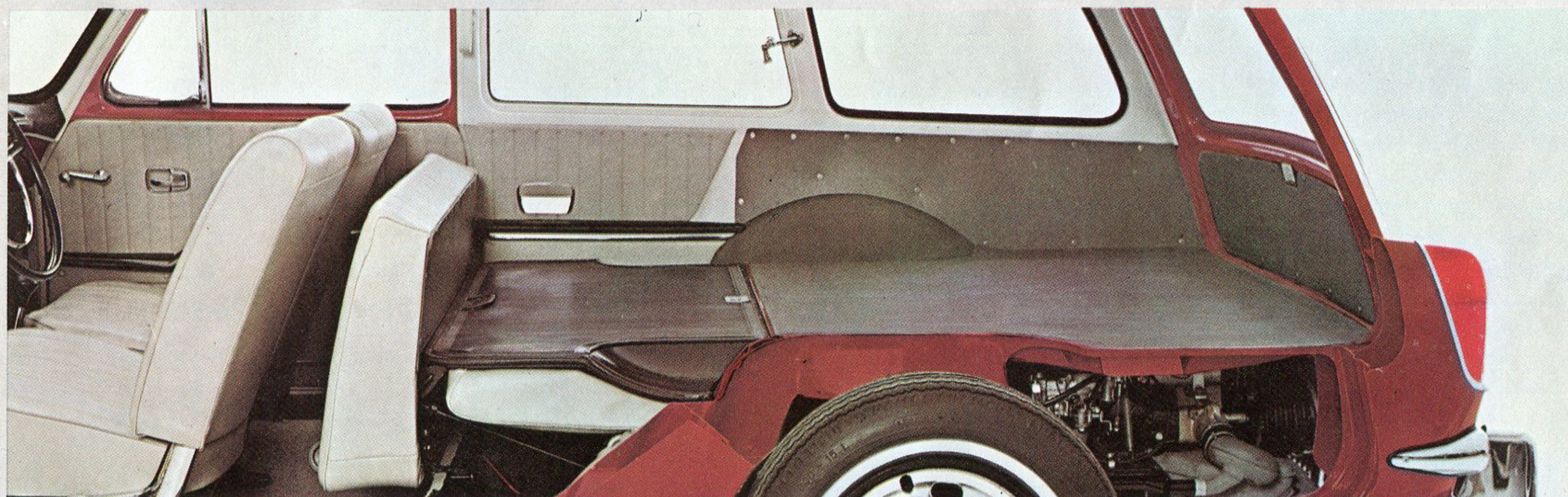
The Squareback's back door is a 42.7" x 25.4" rectangle. It opens up a luggage compartment that's absolutely flat. And a cinch to pack.



The 4-cylinder Squareback engine is cast of light aluminum and magnesium alloys to eliminate dead weight. The pistons travel an unusually short distance at slow speeds. This cuts down engine friction, lengthens engine life.

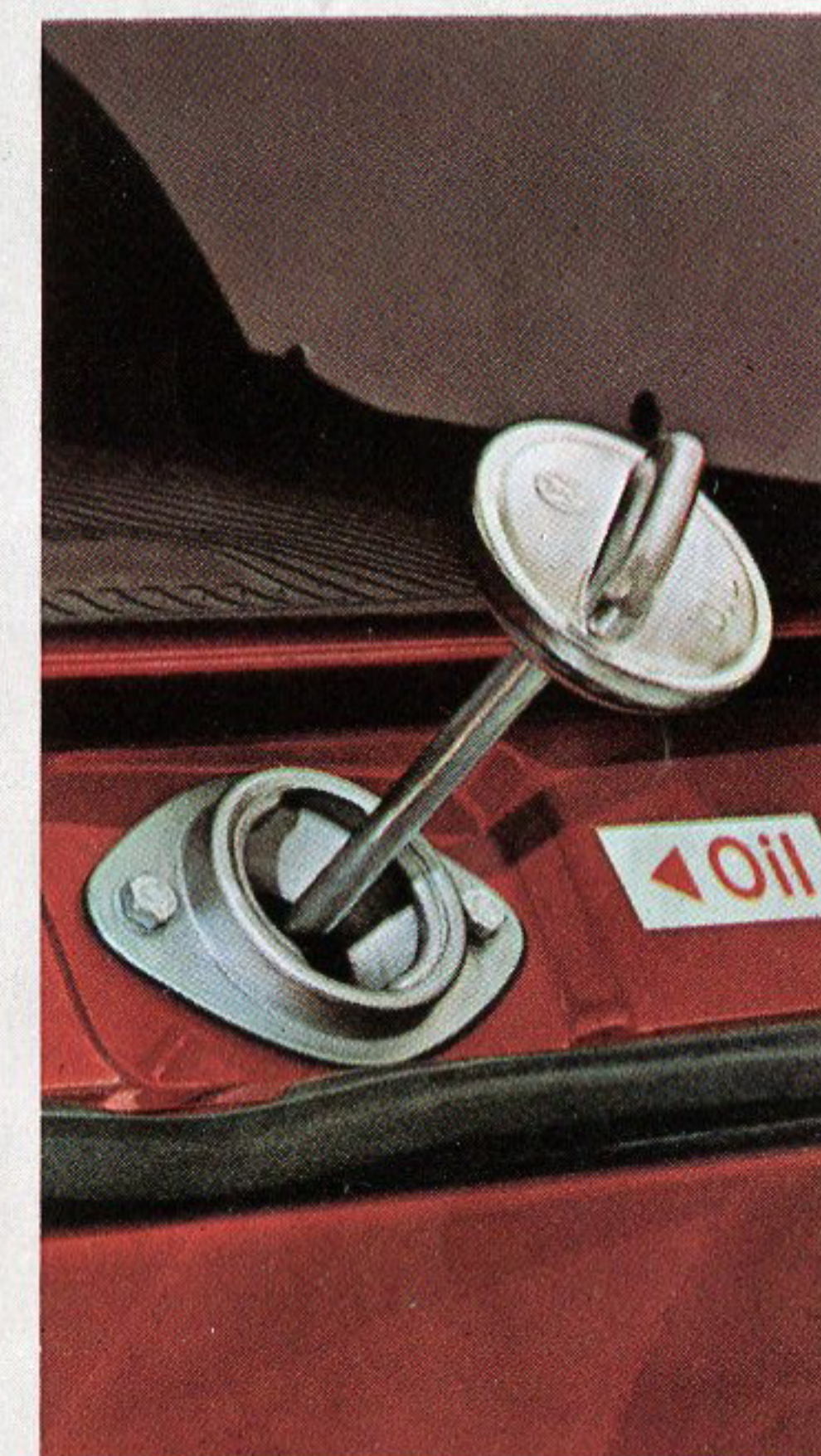


You get even stops, less brake fade with front wheel disc brakes. Standard equipment.



Push down the back seat of your Squareback and you almost double the load area. (From 24.7 cu. ft. to 42.4 cu. ft.) Now you've got a container 65 inches long, 48 inches wide and 31 inches high.

The floor, sides and roof are flat. It's almost like the inside of a packing case. So you can pack more into it. (The largest conventional sedan trunk on the market is only about 23 cu. ft. in size.)



The oil cap (dip-stick attached) is under the back door, *outside* the engine compartment.



# Specifications

## Engine

Type: 4-cylinder, 4-stroke, O.H.V. type VW engine, rear mounted./Bore: 3.37 in./Stroke: 2.72 in./Displacement: 96.66 cu. in./65 HP at 4.600 RPM. S.A.E./Compression ratio: 7.7:1./Piston speed: 1923 FT/MIN. at maximum speed./Crankshaft: four-bearing type./Lubrication: pressure feed by gear pump. Oil cooler in air stream and oil pressure relief valve in crankcase./Oil capacity of crankcase: 5.3 pints./Cooling: air-cooled by a crankshaft-mounted fan./Fuel delivery: diaphragm pump with heat insulating plastic cap./Carburetors: two SOLEX down-draft carburetors 32 PDSIT with automatic choke and accelerator pump./Air cleaner: oil bath type with pre-heated air intake.

## Electrical System

Battery: 6 volt, 77 amp. hours./Generator: 200 watts, with voltage regulator./Windshield washer: pneumatic system with pressurized water container as standard equipment.

## Final Drive

Clutch: single plate, dry./Transmission: fully synchronized gear box. 4 forward speeds, 1 reverse./Gear ratios: 1st-4th gears: 3.80:1, 2.06:1, 1.32:1, 0.89:1. Reverse: 3.88:1. Differential: 4.125:1./Final drive: power transmitted through differential and swinging half shafts to the rear wheels./Oil capacity: 6.4 pints in transmission case.

## Chassis

Frame: semiunitized body with platform frame./Front axle: rubber mounted. Independent suspension by two trailing arms on each side, extra long horizontally crossed torsion bars. Four large rubber stops to prevent excessive wheel movement. Double-acting telescopic hydraulic shock absorbers. Stabilizer./Rear axle: rubber mounted in subframe. Independent suspension by trailing arms and swinging half shafts. Two transverse torsion bars. Rubber stops and shock absorbers as in front axle./Steering: worm and roller type, self-centering, with maintenance-free tie rods and hydraulic steering damper./Turning circle: 36.5 ft., 2.8 turns of steering wheel from lock to lock./Ignition: non-repeat lock type./Tires: tubeless 6.00 x 15, low profile type./Brakes: hydraulic foot-brake operating on all four wheels, disc brakes at front. Transparent brake fluid reservoir./Hand-brake: mechanical, acting independently on rear wheels./Fuel tank: under front luggage compartment. 10.6 gal. capacity.

## Body

Doors: two doors, 42.1 in. wide each. Can be locked from outside and inside. Large pockets and padded armrests./Rear door: maximum width 42.7 in., max. height 25.4 in. Lockable push button lock./Windows: safety glass. Windshield has three defrosters and two fresh air vents./Bucket seats: two in front. Adjust back and forth in seven positions.

Backrests adjust at seven angles. Backrests automatically locked to prevent them tilting forward./Rear seat: armrests on quarter panels./Safety belt anchor points./Heating: two openings at foot level in front. Two vents at foot level in rear. Three defroster vents below windshield. Two adjustable fresh-air vents under dashboard. Three operating levels on the instrument panel./Optional at extra cost: steel sliding sunroof. Whitewall tires.

## Dimensions

Wheel base: 94.5 in./Track: front 51.6 in., rear 53.0 in./Length: 166.3 in./Width: 63.2 in./Height: 58.1 in.

## Weights

Shipping weight: 2095 lbs./Payload: 992 lbs./Total weight: 3087 lbs.

## Performance

Maximum and cruising speed: 84 mph./Climbing ability: (with half payload) 1st gear—41.5%, 2nd gear—21.5%, 3rd gear—12.5%, 4th gear—7.5%/Fuel consumption: 28 mpg. Acceleration: from 0 to 50 mph. in 12.5 sec.

Loading Compartment: rear seat backrest up:

Length	42.5 inches
Width	46.1 inches
Height	31.9 inches
Loading area	11.8 square feet
Capacity	24.7 cubic feet
plus front luggage compartment	6.5 cubic feet
Total	31.2 cubic feet

Rear seat backrest down:

Length	65.8 inches
Width	48.0 inches
Height	31.9 inches
Loading area	19.4 square feet
Capacity	42.4 cubic feet
plus front luggage compartment	6.5 cubic feet
Total	48.9 cubic feet

Volkswagenwerk AG. Wolfsburg, Germany

Specifications subject to change without notice. Latest colors and interior appointments may be seen at your Authorized VW Dealer.

HICKOX MOTOR SALES, INC.  
VOLKSWAGEN SALES AND SERVICE  
DW HIGHWAY NORTH  
MANCHESTER, N. H.