

The VW Campmobile.





The VW Campmobile is a mobile holiday home. It wends its way through city traffic like a saloon and is just as modest in its parking requirements. On the motorway, it runs for hours at top speed. It climbs untiringly up mountain roads. Winds nimbly and easily along steep serpentine roads. There's no thoroughfare too narrow

for it. No lane too small. The VW Campmobile will get you through. And take you anywhere. The VW Campmobile has a chassis with individual wheel suspension, and even a semi-trailing arm rear axle. Its springing has been carefully balanced. There is positive steering with hydraulic steering damper,

The VW Campmobile — a

a safety steering column, and a circuit brake system with disc brakes in front and drum brakes at rear. All this gives it driving characteristics which not a few sporty saloons might envy. The VW Campmobile is a comfortable holiday home on wheels. The wood panelling of the interior is in dark-toned spruce. The furniture has an easy-to-



modern mobile holiday home.

clean plastic veneer in spruce grain. The colourful fabric upholstery is hard-wearing and matches the warm wood tones. There are curtains on all the windows for privacy, and a ceiling light for pleasant illumination. A holiday house where you can really feel at home. A holiday house with a living room which is the ideal travelling

compartment for children — where they can play, eat or while away the time in some other amusing way. A large, free-standing tent is also available at extra charge for your VW Campmobile. It enlarges the space of your holiday home, makes it more versatile and provides additional living and sleeping accommodation.

The tent has a rubber groundsheet and its big advantage is that it can be put up independently of the car, so you can drive away and leave it standing.

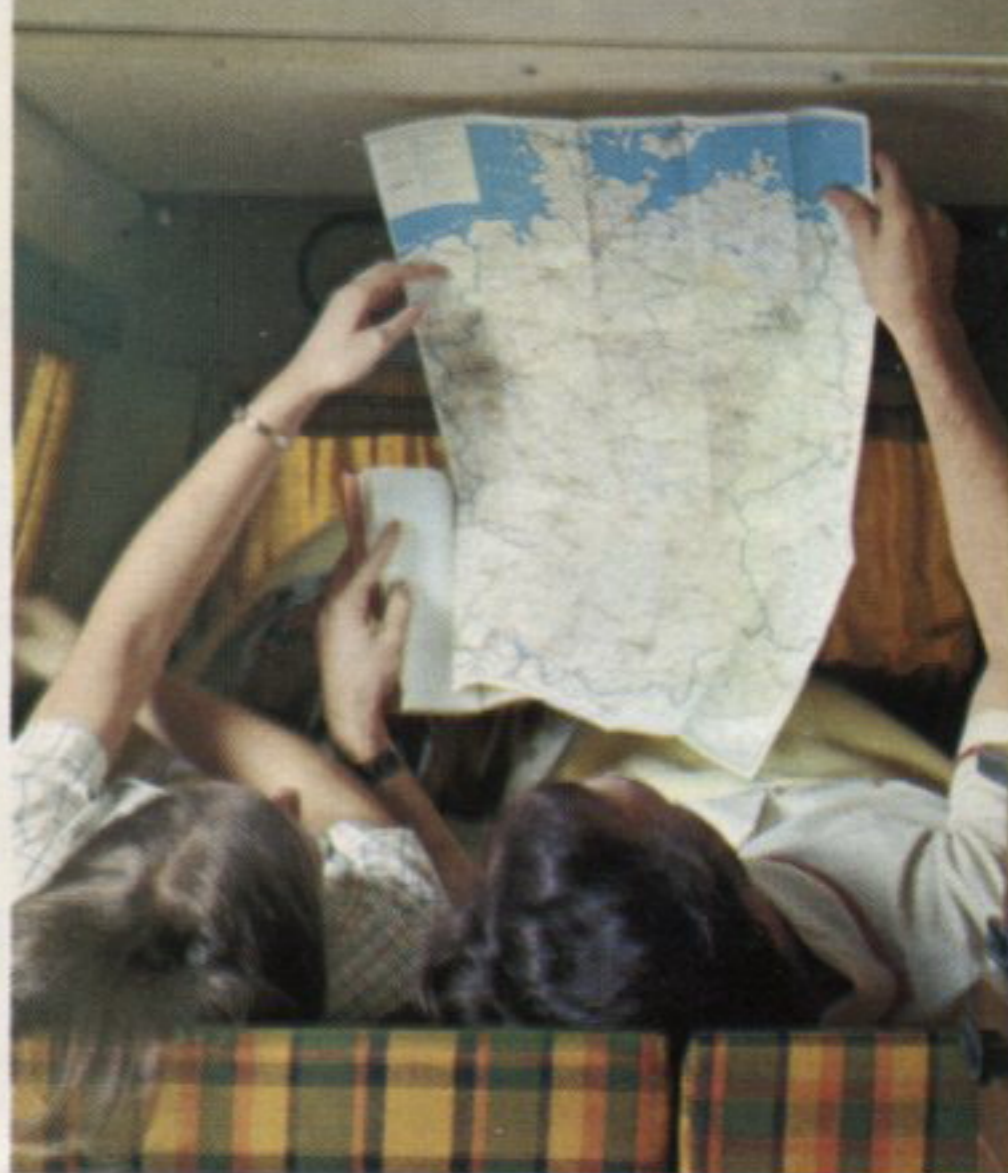


The VW Campmobile —

With the VW Campmobile, you are completely independent of hotels and restaurants. You are living in your own home. Cosy and comfortable. The VW Campmobile is furnished with an upholstered bench to seat two, and a table. Another seat is provided by the

front passenger seat. This can simply be turned 180° to face the other way. And, after an eventful day, when you turn in to enjoy your well-earned rest, it is no trouble at all to convert the living room into a bedroom. As you pull the seat of the upholstered bench

forward, the backrest folds back to meet the mattress over the engine compartment to make a full-sized double bed. The bed-clothes are conveniently stored in the locker under the mattress. But there is plenty more sleeping accommodation. A child's bed



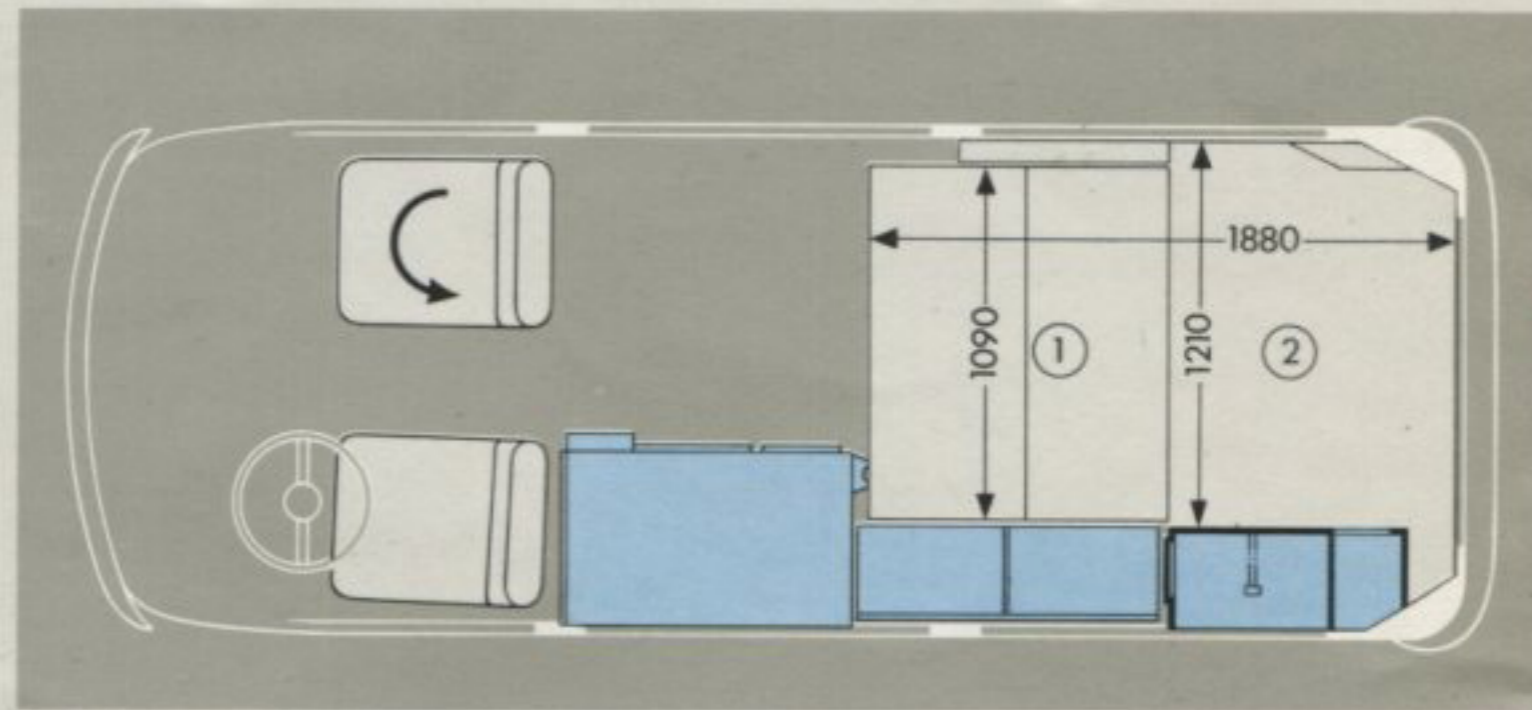
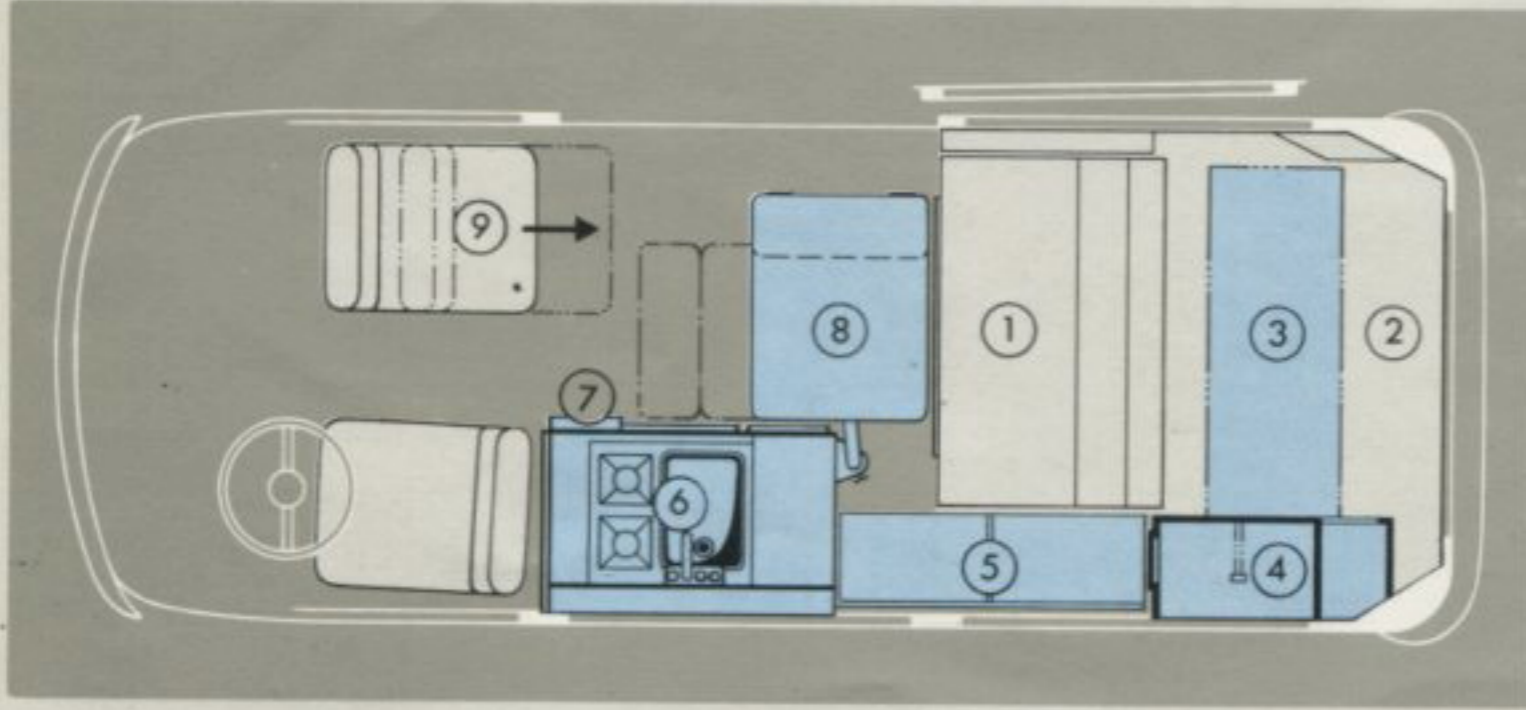
your home away from home.

can be slung up in the driver's cab, over the seats. And there is another double bed under the elevating roof. Here you can take your afternoon siesta without having to rearrange the living room. In the VW Campmobile, you can be

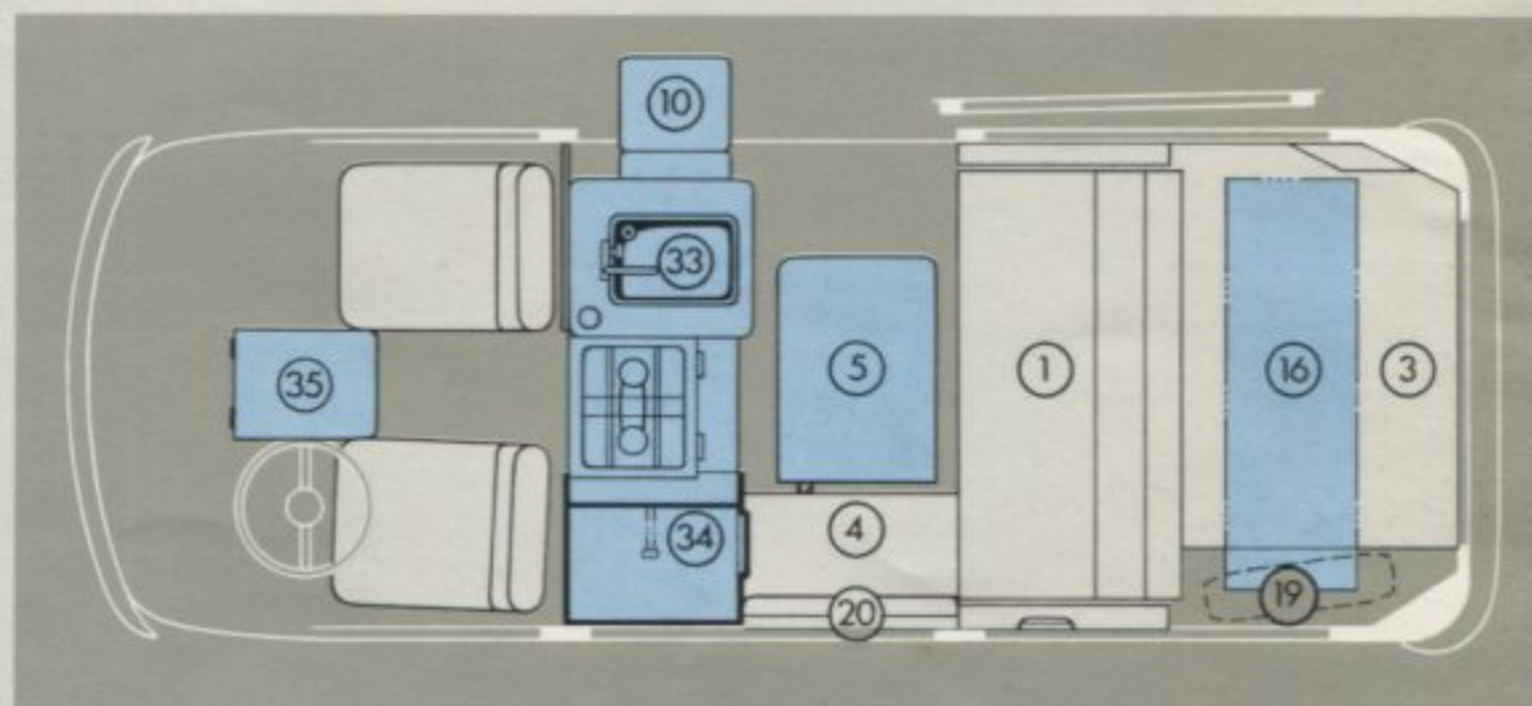
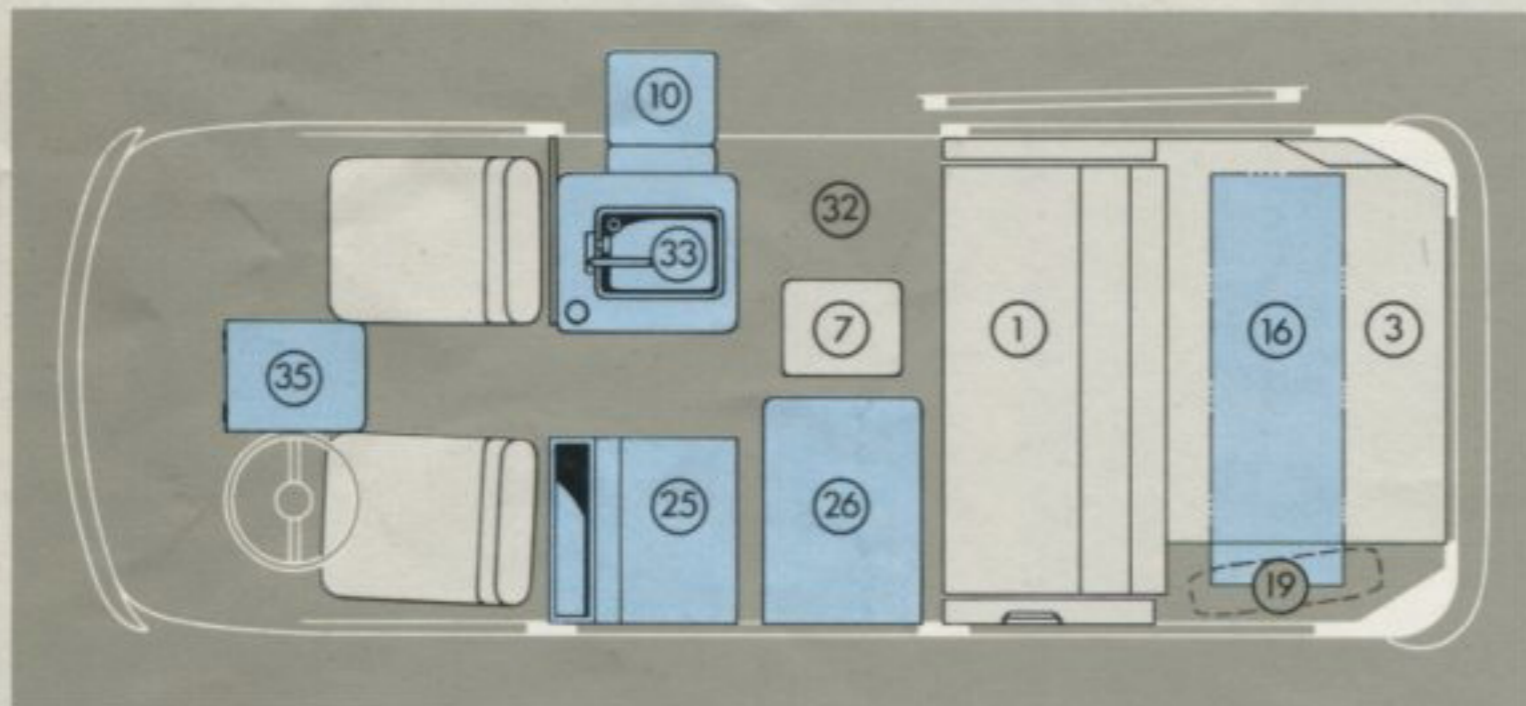
your own chef. You can eat whatever you happen to fancy. You can cook like at home, on a two-ring propane gas cooker. Next to that, there is a stainless-steel sink, supplied with fresh water by 2 x 12 litre tanks, and with outside drainage. The water-tanks and

propane gas flasks* are accommodated in a cabinet under the sink. An icebox (ice-chest at extra charge) has also been provided.

* At extra charge.



- | | | |
|--------------------------------------|--|---|
| 1 Two-seat rear bench | 5 Icebox (ice chest at extra charge) | 7 Spare wheel |
| 2 Upholstery over engine compartment | 6 Kitchen unit with sink, 2-ring gas cooker, drawers, water tanks and space for gas flasks | 8 Swivelling dining table, with extension |
| 3 Roof locker | | 9 Turning seat |
| 4 Wardrobe with 3 shelves | | |



Concept 1 (without wardrobe and gas cooker)

Concept 2 (without wardrobe and gas cooker)

- | | | |
|--------------------------------------|---|--------------------------------|
| 1 Upholstered rear bench | 10 Wash unit with folding table | 26 Folding dining table |
| 3 Upholstery over engine compartment | 16 Wall cabinet over the engine compartment | 32 PVC flooring |
| 4 Upholstered side bench | 19 Spare wheel cover | 33 Cabinet for supplies |
| 5 Swivelling dining table | 20 Backrest (headrest) | 34 Wardrobe |
| 7 Upholstered stool | 25 Upholstered front bench | 35 Spare table in driver's cab |

The VW Campmobile —

The VW Campmobile is available in one standard equipment. In three different paintwork colours, and with a choice of two upholstery fabrics. The roof is available as an elevating roof (shown in this prospectus) and as a level pop-up roof. Both are made

of highly resistant fibre-glass. The walls are of weather-proof canvas. The roofs are easy to raise and retract, and catch automatically in place. A pleasant novelty is the build-in-yourself "Camping" set, available in two versions. This set was created for

Standard equipment "P 21/P 22"

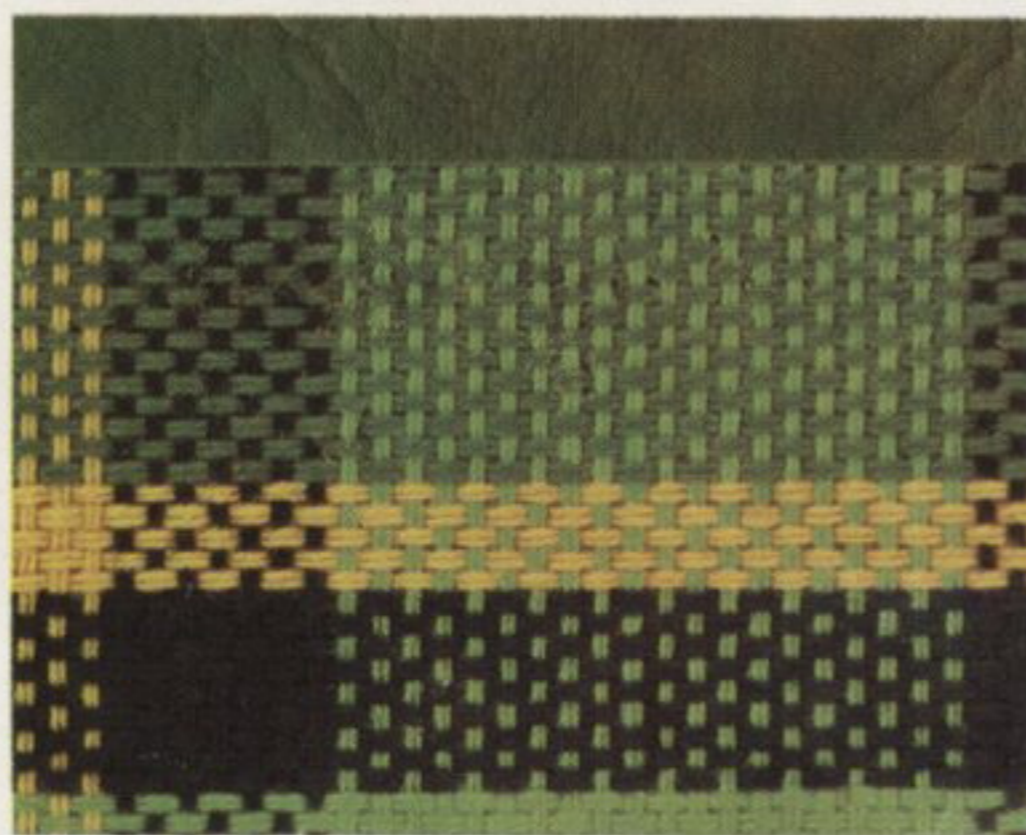


marino yellow E6E6-

taiga green P4P4-

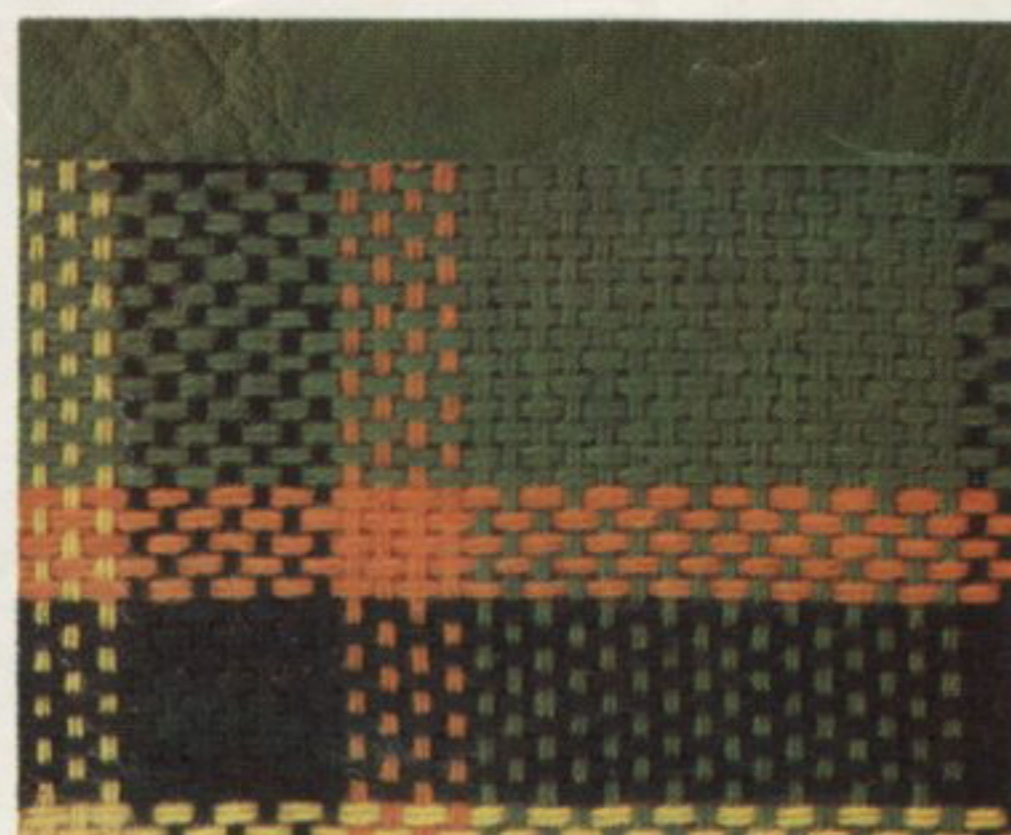
pastel white R1R1-

"Camping" set



camping green-yellow

--34



camping green-red

--41

Possible colour combinations Equipment "P 21/P 22"*	Exterior colours			
		marino yellow	taiga green	pastel white
Upholstery				
camping green-yellow	--34		■	
camping green-red	--41	■		■
Roof colour				
pastel white	-R1-	■		

The pastel white roof colour -R1- is available at extra charge for vehicles with the exterior colours marino yellow -E6- and taiga green -P4-.

Print processes do not allow exact reproduction of colours. This applies to the exterior colours as well as to the upholstery.

its equipment and colours.

people who like to use their VW Kombi or VW Microbus for normal business or family use during the week, and as a Campmobile only on week-ends or during the holidays. It takes no time to remove the standard seating and install the "Camping"

set in its place. If you want your Campmobile with an elevating roof, please make sure that you order the standard vehicle (VW Kombi / VW Microbus) with the necessary attachments: the roof reinforcements M 073.

* Please ask your VW dealer for information regarding the cloth upholstery available for the "Camping" set.

Technical Data.

	VW Campmobile 1.6 liter engine	VW Campmobile 2.0 liter engine
Engine	four-cylinder, four stroke, horizontally opposed, air-cooled, rear mounted	
Capacity, cc	1584	1970
Output, kW ¹⁾ at 1/min ¹⁾ DIN bhp at rpm SAE bhp net	37/4000 50/4000 48/4000	51/4200 70/4200 67/4200
Maximum torque, Nm ¹⁾ at 1/min ¹⁾ DIN mkg at rpm SAE net lbs. ft.	108/2800 10.8/2800 74.5/2800	143/2800 14.3/2800 98.6/2800
Electrical system	12 V/45 Ah alternator with 50 amp. max. (= 700 watt)	12 V/45 Ah alternator with 55 amp. max. (= 770 watt)
Transmission via	fully synchromesh four-speed gearbox, or at extra charge (with 2.0 liter engine only) VW automatic transmission	
Wheel suspension and springing	individual wheel suspension and torsion bar springing	
Wheel location, front/rear	via cranked trailing links / semi-trailing arms	
Brakes, front/rear	disc / drum	
Tyres	diagonal 7.00 — 14 8 PR	radial ply 185 R 14 C
Wheel base, mm (ins.)	2400 (94.5)	
Track, front/rear, mm (ins.)	1395/1455 (54.9/57.3)	
Length/width, mm (ins.) Height without additional roof fittings, mm (ins.) with elevating roof, mm (ins.)	4505/1720 (177.4/67.7) 1955 (77.0) 2035 (79.11)	
Unladen weight, kg (lbs.) Permissible axle load front/rear, kg (lbs.) Payload, depending on distribution up to, kg (lbs.) Permissible total weight, kg (lbs.)	1475 (3252) 1010/1270 (2227/2800) 775 (1708) 2250 (4960)	1495 (3296) 1010/1270 (2227/2800) 755 (1664) 2250 (4960)
Maximum speed, km/h mph	110 68	127 122 (with automatic transmission) 79, 75.5
Fuel consumption ²⁾ , l/100 km mpg imperial	11.4 (regular fuel) 24.8	12.5 (regular fuel) 22.6 13.3 (with automatic transmission) 21.2

¹⁾ New unit for indication of engine output and maximum torque.

²⁾ With half payload, at steady $\frac{3}{4}$ of top speed, plus 10 %.

Cab equipment:

Plastic lined throughout, footwells lined with plastic foil. Floor lined with insulating carpeting. Wheel housings damped with rubber. Further insulation and damping in cab. Driver's seat adjustable to nine positions, backrest adjustable over full range. Fabric seat covers. Safety door locks. Coat hooks. Armrests. Safety inside mirror. Ashtray. Grab handle for front seat passenger. Heating and ventilation system adjustable over wide range. Ventilation air flow adjustable in all directions. Adjustable draught-free ventilation system in cab doors. Particularly effective windshield defroster. Glove compartment. Non reflecting instrument panel padding. Fuel gauge. (Special Campmobile equipment see main text.)

A selection of extras at extra charge:

Rubber strips on bumpers. Halogen headlights. Two-tone paintwork. Laminated windscreen. Tinted glass windows in cab. Two convex mirrors outside. Vent windows in cab. Lockable tank flap. Lockable engine compartment cover. Heatable rear window. Twin back-up lights. Mud flaps at rear. Trailer connection. Anti-corrosion treatment for body cavities. Automatic transmission (only in conjunction with 2.0 liter engine). Radial ply tyres (standard on 2.0 liter models). Brake servo (standard on 2.0 liter models). Day/night rearview mirror. Lockable glovebox. Head restraints for all seats in cab. Stationary and auxiliary heater. Warning light for dual circuit brake combined with hand-brake signal lamp. Trip recorder. Electric clock. Complete radio system (various models). Fresh air blower.

Volkswagens are delivered to 140 countries in the world over. Obviously, traffic laws and type-approval regulations tend to vary from country to country. You may find, therefore, that the models and equipment actually offered for sale differ from the data given in this brochure. So please ask your nearest VW dealer for information regarding the range of VW models and equipment valid for your country.

